



Comhairle Contae Thiobraid Árann
Tipperary County Council



N62 Slievenamon Road Phase 2 Road Improvement Scheme

Part 8 Planning Application

28 July 2022

Non-confidential - Standard

Agenda

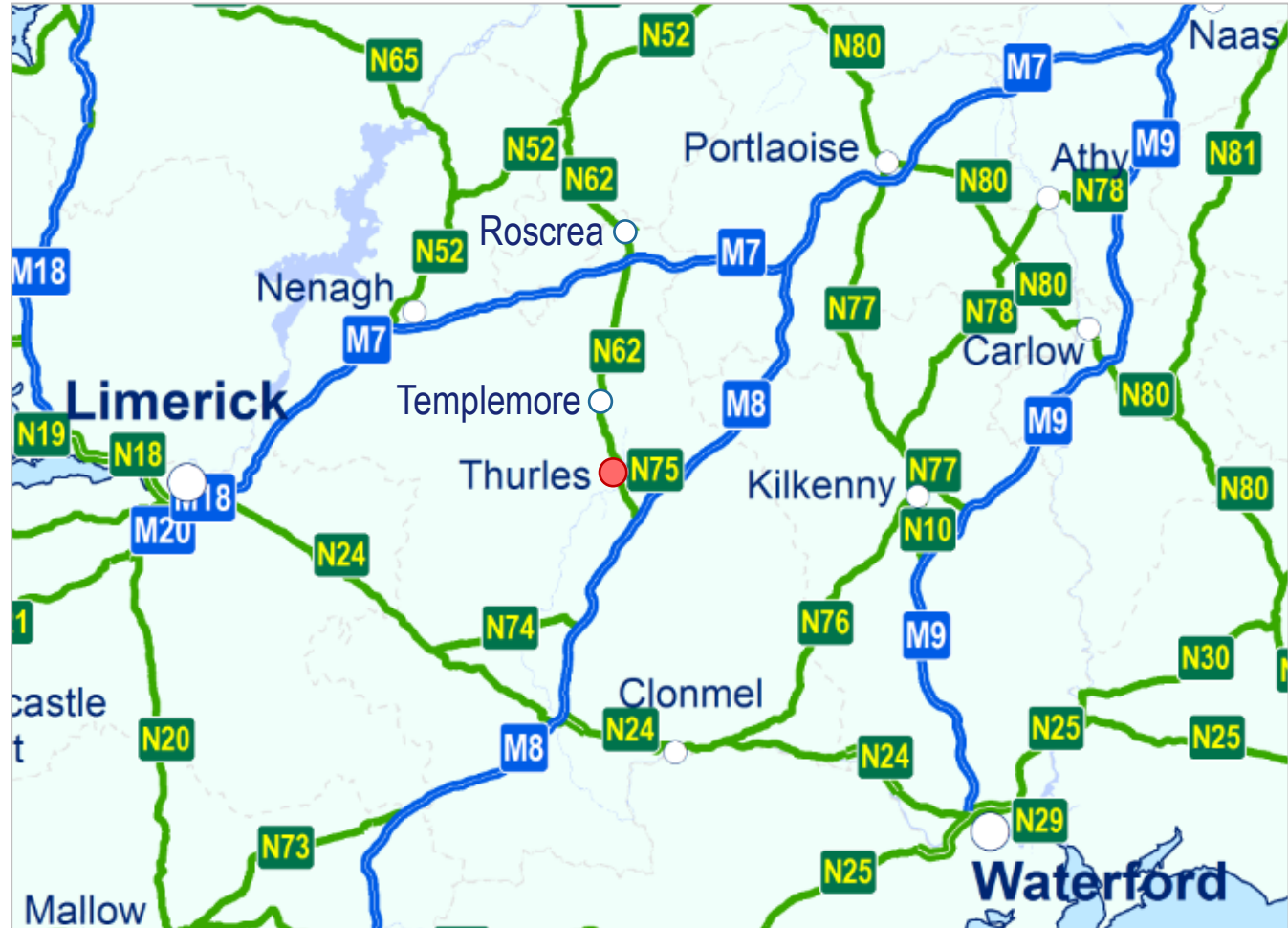
- 1 Introduction
- 2 Need for the Scheme
- 3 Scheme Proposals
- 4 Next Steps

Introduction

Introduction

The **N62** road is a National Secondary Route that links the towns of **Thurles**, **Templemore** and **Roscrea** in Co. Tipperary. The route also provides regional accessibility by linking the M7 Limerick-Dublin and M8 Cork-Dublin motorways within the county.

Based on TII traffic data (2019), the N62 Slievenamon Road caters for approximately **8,650 vehicles per day** within Thurles ¹.

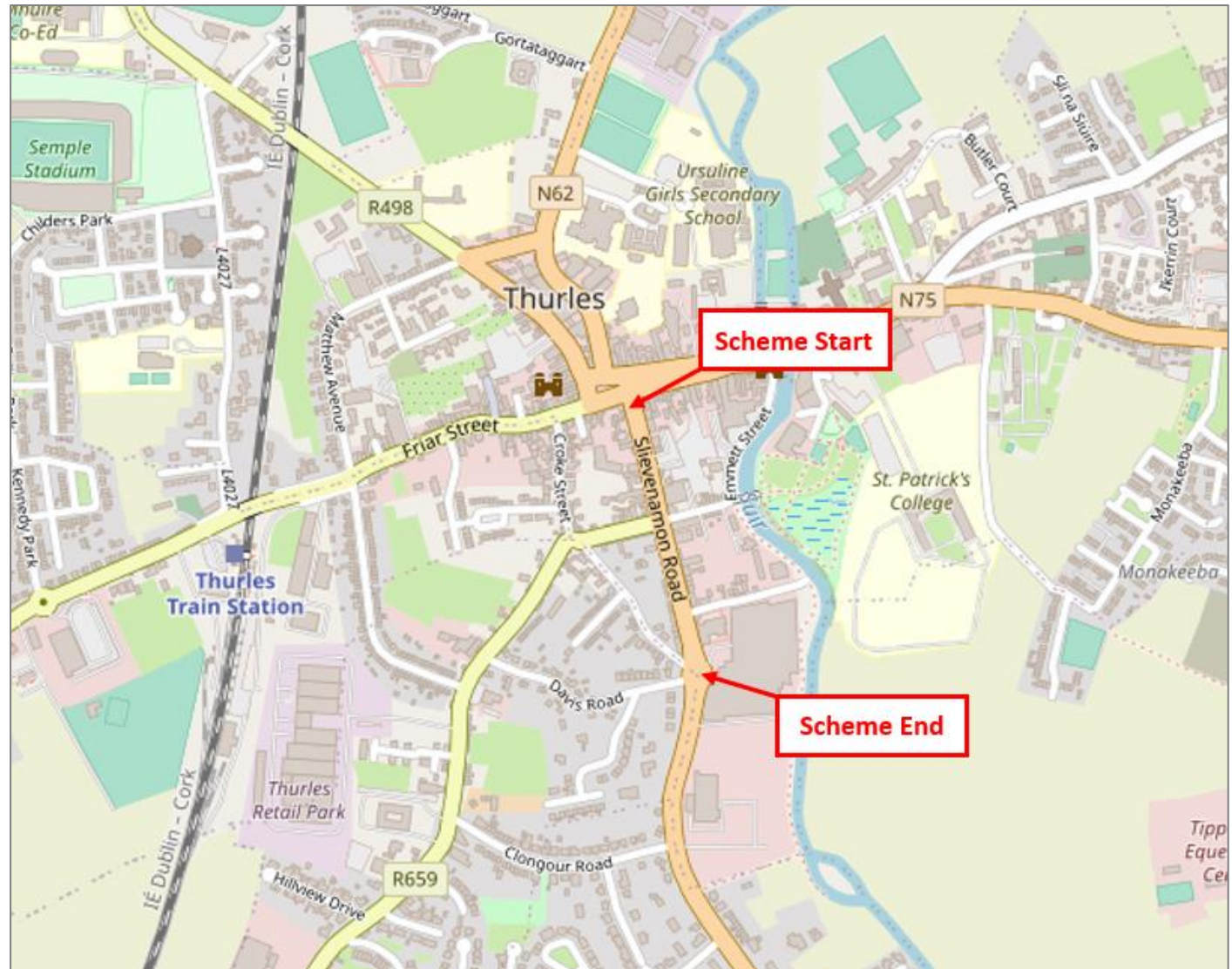


1. TII Traffic Counter TMU N62 050.0 S (2019 data)
Source <https://www.nrtraffdata.ie/>

Scheme Location

The scheme extends from **Liberty Square** at the northern end of Slievenamon Road, to the **Thurles Shopping Centre Roundabout** at the southern end. It includes the Fianna Road / Thomond Road junction approximately midway along the scheme extents.

In total, the scheme comprises the upgrade of approximately **450m** of national route through Thurles.



Scheme Design



Need for the Scheme



Existing Issues

Road Safety

- Deficiencies with respect to road layout, signage and road markings
- Increased risk of collisions between pedestrians and vehicles
- TII Road Safety Inspection Report May 2018 recommended that, *'this section of the N62 inside the 50km/h zone should be upgraded to improve safety and comfort for vulnerable road users and to reduce the severity and frequency of traffic collisions.'*

Inadequate Pedestrian Infrastructure

- Footway assessment found that 52% of the existing footways have less than desirable 2.5m width in accordance with design standards (DMURS)
- Pedestrian Crossing Demand Assessment shows that existing crossing provision does not meet current demand
- Unauthorised parking on existing footways is causing obstructions to pedestrians and vulnerable road users and causing increased deterioration of footway surfacing

Poor Pavement Condition

- Visual inspection recorded a full range of defects present relating to the condition of surface course and the integrity of the pavement structure
- Pavement Condition Surveys have confirmed the need to improve the pavement structure
- TII Pavement Asset Repair and Renewal (PARR) Report November 2018 recommended structural strengthening of existing pavement to maintain the road asset

1



Wide road cross section in places (greater than 10.0m) with poor footway surface

2



Pavement deterioration (cracking, patching, uneven surface, material loss)

3



Poor pedestrian access across junction mouths with poor footway surface

4



Lack of footway definition across service station forecourt and access points

5



Illegal parking on footways causing obstruction and damage to surface

6



Footway deterioration due to vehicle overrun on existing narrow footways

Planning Context

Sectoral Policy

Road Safety
Authority Road
Safety Strategy
2021-2030

National Sustainable
Mobility Policy 2022

TII Sustainability
Implementation Plan
– Our Future

National Planning Policy

Project Ireland 2040
– National Planning
Framework

National
Development Plan
2021-2030

Regional Planning Policy

Regional Spatial and
Economic Strategy
for the Southern
Region (Mid-West and
South-East Areas)

Local Planning Policy

North Tipperary County
Development Plan 2010-
2016 (as varied and extended)

Draft Tipperary County
Development Plan 2022-
2028

Thurles and Environs
Development Plan 2009-
2015 (as varied and extended)

Thurles Town Centre
Renewal Strategy



Scheme Objectives

1

Improve Road Safety

Promote reduced speeds along N62 Slievenamon Road and maintain reduced speeds through urban centre

2

Enhance Pedestrian Infrastructure

Provide a safe and comfortable route for pedestrians and vulnerable road users along footways in accordance with DMURS principles

3

Improve Pedestrian Crossings

Ensure all crossings are conspicuous with buildouts and removal of obstructions to improve visibility for motorists and vulnerable road users

4

Improve Public Realm

Create an attractive environment and improved sense of place to promote walking journeys between commercial, social and education facilities

5

Support National, Regional and Local Policies

Develop a scheme that supports planning and development objectives both within Thurles town and at a regional & national level

Scheme Proposals

Lack of greenery

Overhead cables
adding to visual clutter

Aged footway
surface materials

Damaged street
furniture

Poor pavement
surface

Informal on-street
car parking

VP01 – Existing View

High quality street lighting

Footway widths optimised to meet current standards

High quality materials to complement Liberty Square

Tree pits acting as sustainable urban drainage measure to improve storm water network capacity

Improved pavement surface

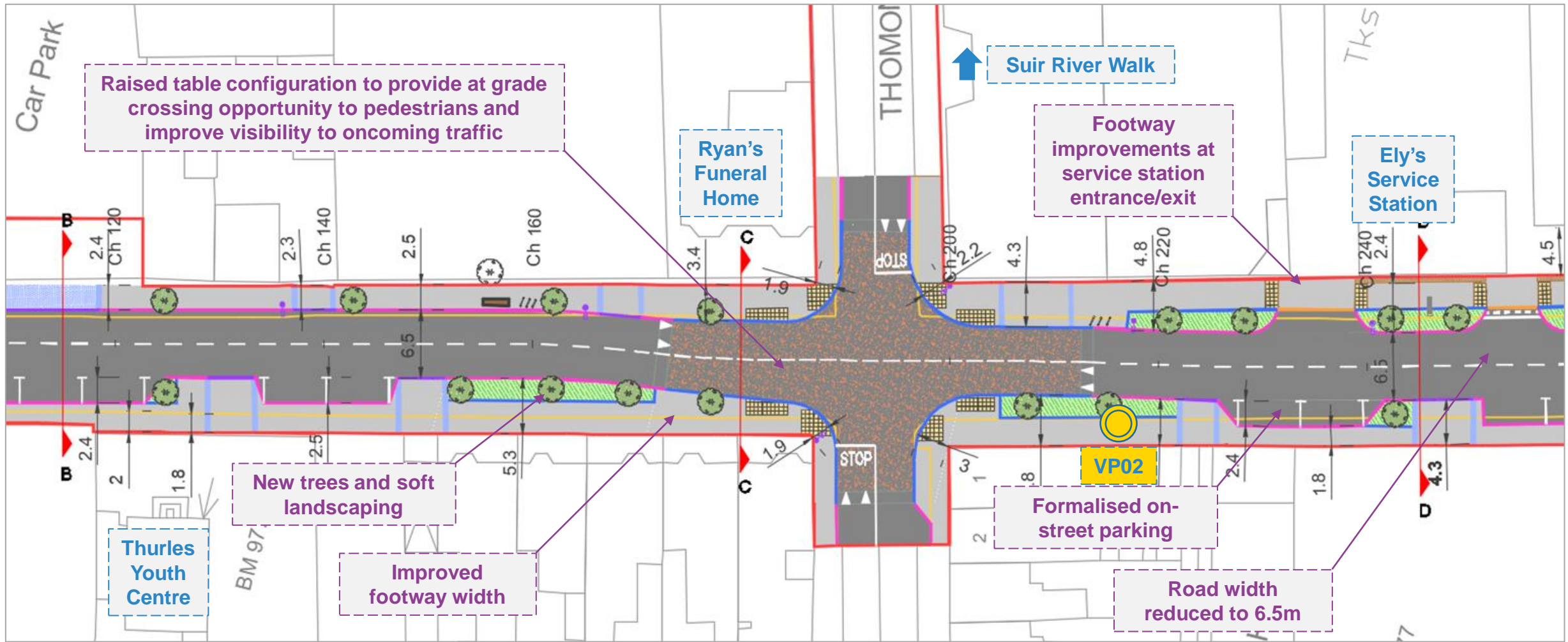
Tree canopy providing environmental benefits and enhanced streetscape

Seating to encourage people to spend time in the area and provide resting points for elderly

Planting to enhance streetscape and act as buffer to road

Overhead services diverted underground

Opportunity for street art to enhance street character



Scheme Proposals

Chainage 0+130 to 0+230

Overhead cables
adding to visual clutter

Informal on-street
parking encroaching
on carriageway

Aged footway surface
and kerb materials

Poor surface
water drainage

Poor pedestrian
crossing facilities
at junction

Excessive road
width and poor
pavement surface

Lack of greenery

VP02 – Existing View

High tree canopy providing environmental benefits and enhanced streetscape

Overhead services diverted underground

Improved street lighting

Raised table configuration to provide at grade crossing opportunity to pedestrians and improve visibility to oncoming traffic

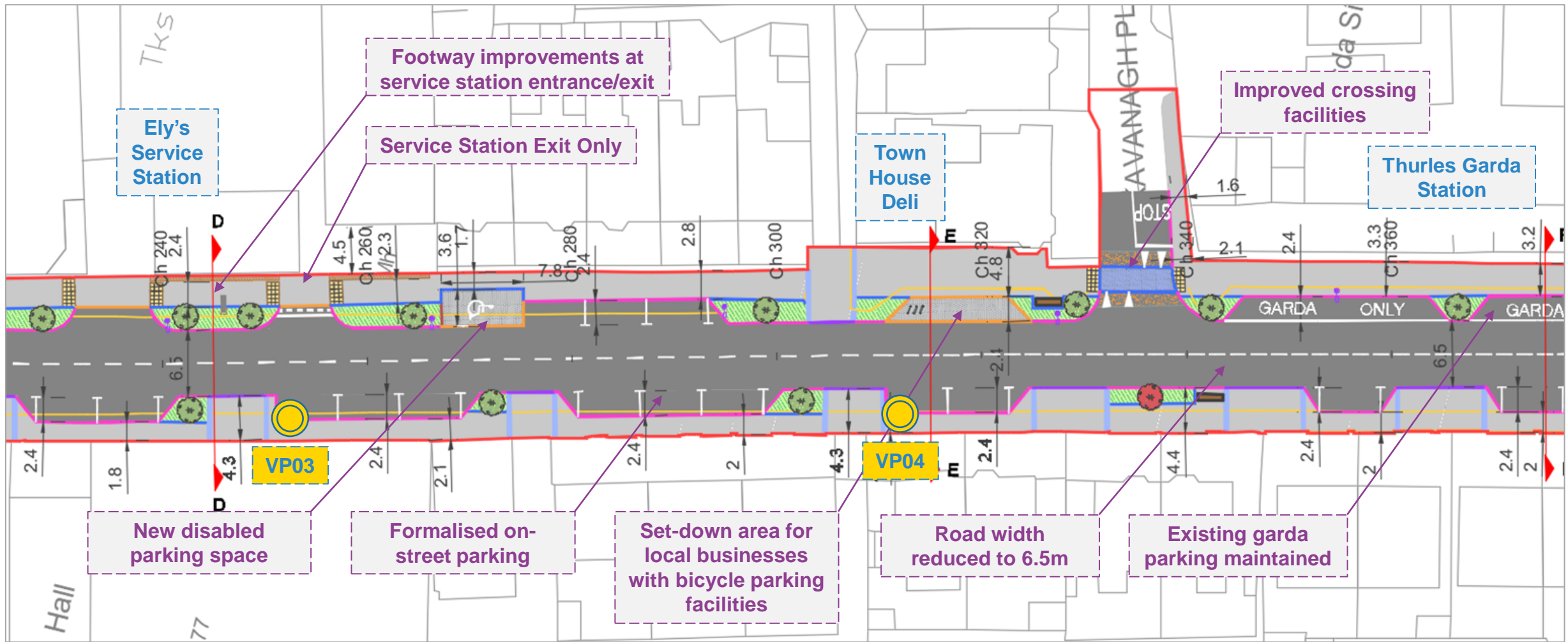
Pollinator friendly planting to enhance streetscape and act as buffer to road

Footway widths optimised to meet current standards with new surface materials

Improved pavement surface

FOR ILLUSTRATION PURPOSES ONLY

VP02 – Montage View



Scheme Proposals

Chainage 0+230 to 0+360



No pedestrian priority at entrance/exit to service station

Lack of safe on-street parking

Poor surface condition and undefined footway extents

Poor pavement surface

VP03 – Existing View

High tree canopy providing environmental benefits and enhanced streetscape

Improved definition of footway across entrance/exit to allow safe pedestrian movement along street

Pollinator friendly planting to enhance streetscape and act as buffer to road

Improved footway surface and reconfigured service station access to 'Exit Only'

Formalised on-street parking

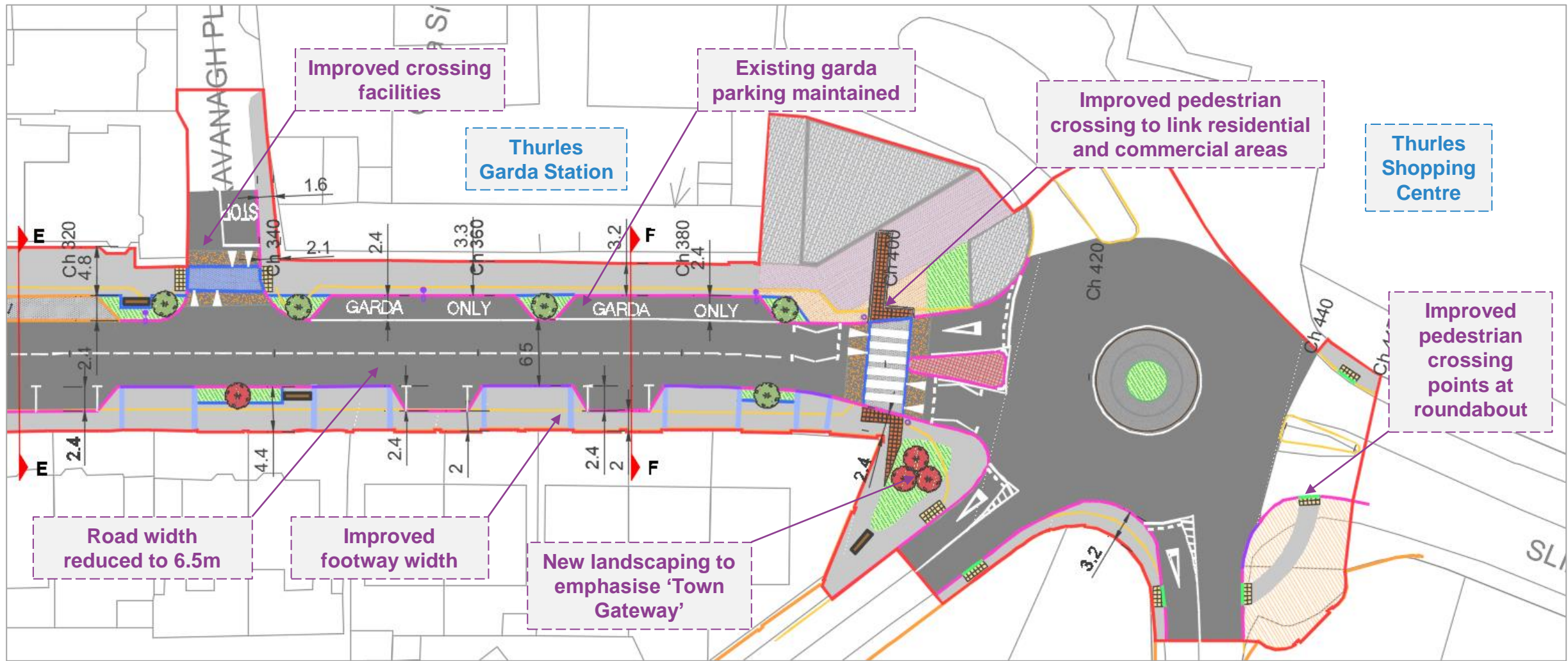
Improved pavement surface

FOR ILLUSTRATION PURPOSES ONLY

VP03 – Montage View



VP04 – Existing View



Scheme Proposals

Chainage 0+360 to 0+450

Next Steps

Key Planning Dates

Notice of Proposed Development

- **28/07/22:** Publication of Part 8 Planning Application containing the following information;
 - Drawings
 - Planning Report
 - Preliminary Examination for Environmental Impact Assessment
 - Screening for Appropriate Assessment
 - Cultural Heritage Impact Assessment Report
 - Photomontages
- **28/07/22:** Notice to prescribed bodies and relevant internal Tipperary County Council sections
- **28/07/22:** Information Briefing to Thurles Municipal District Elected Members and Business Representative Groups

Planning Period

- **28/07/22 to 26/08/22:** Public Inspection Period (Week 1 – 4)
 - Public Display at **Thurles** Municipal District Office, Civic Offices **Clonmel** & Civic Offices **Nenagh**
 - **02/08/22:** Public Information Session at Thurles Municipal District Office
- **28/07/22 to 09/09/22:** Submission Period (Week 1 – 6)
- **12/09/22 to 07/11/22:** Preparation of Chief Executive Officer's Report (Week 7 – 14)
- **07/11/22:** Submission to Elected Members (by end Week 14)
- **07/11/22 to 19/12/22:** Consideration by Elected Members (Week 14 – 20)
- **19/12/22:** Planning Decision (by end Week 20)



Thank you