

'THE PLAN'

FINAL PROPOSAL

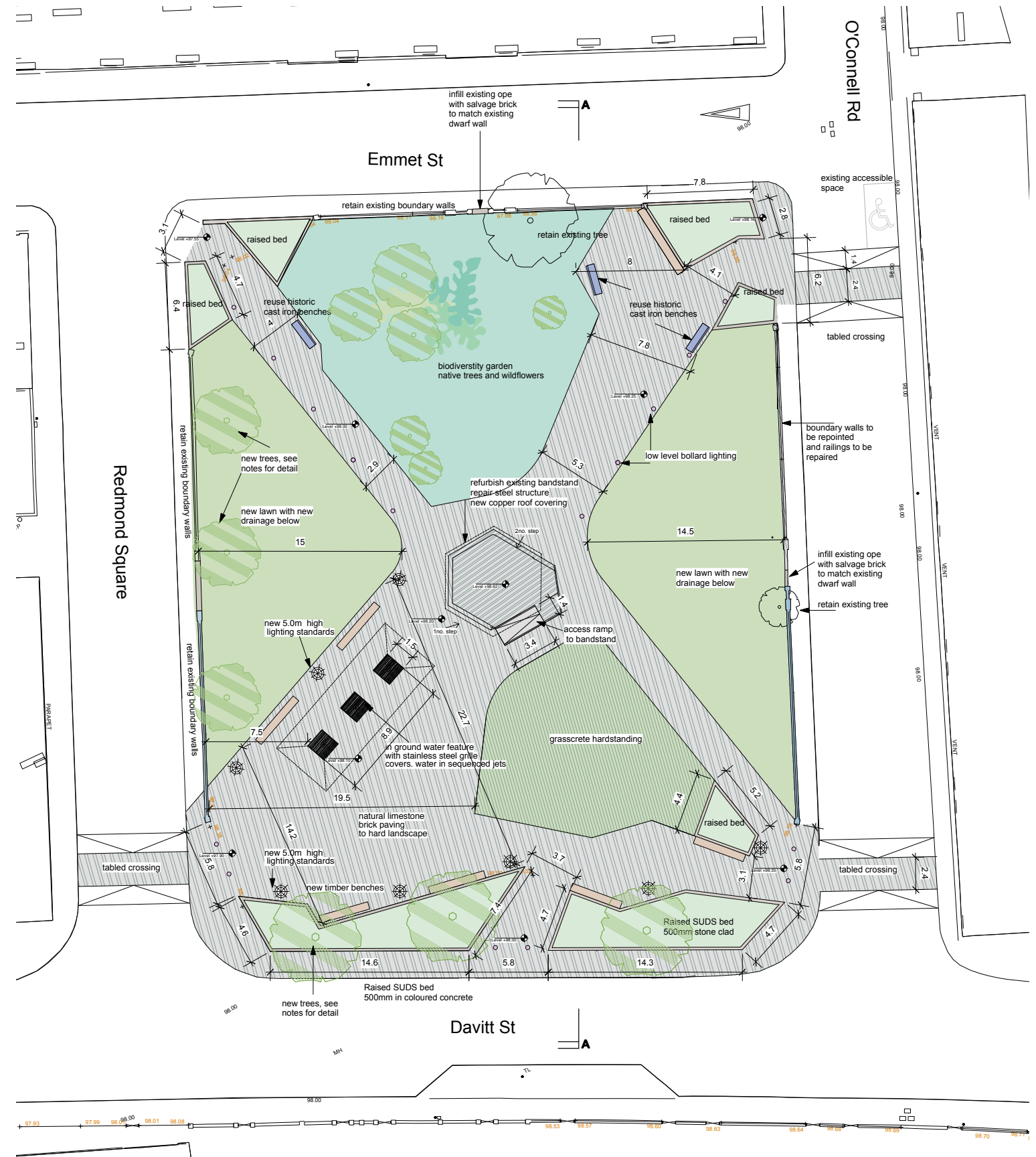


'The Plan' Redmond Square Design Statement

'THE PLAN' FINAL PROPOSAL

The proposed development will consist of:

1. Redesign of the park layout and pedestrian routes
2. The refurbishment of the bandstand to include repair of steel structure, new roof covering and rain-water goods, new accessible ramp and balustrade
3. Alterations to and refurbishment of existing park boundary walls and railings
4. Replacement of boundary wall on Davitt Street with a new raised planted bed
5. New raised table pedestrian crossings at Emmet Street and Redmond Square
6. New hard landscaping to include paved areas, paved pathways and raised beds
7. New specimen tree planting, perennial and shrub planting to raised beds, lawn areas and native wildflower meadow in selected locations.
8. Refurbishment of existing historic cast iron benches
9. New seating, furniture and lighting
10. New water feature
11. Sustainable urban drainage and all ancillary site works.



Refer to DHA Drawing No. 00 002

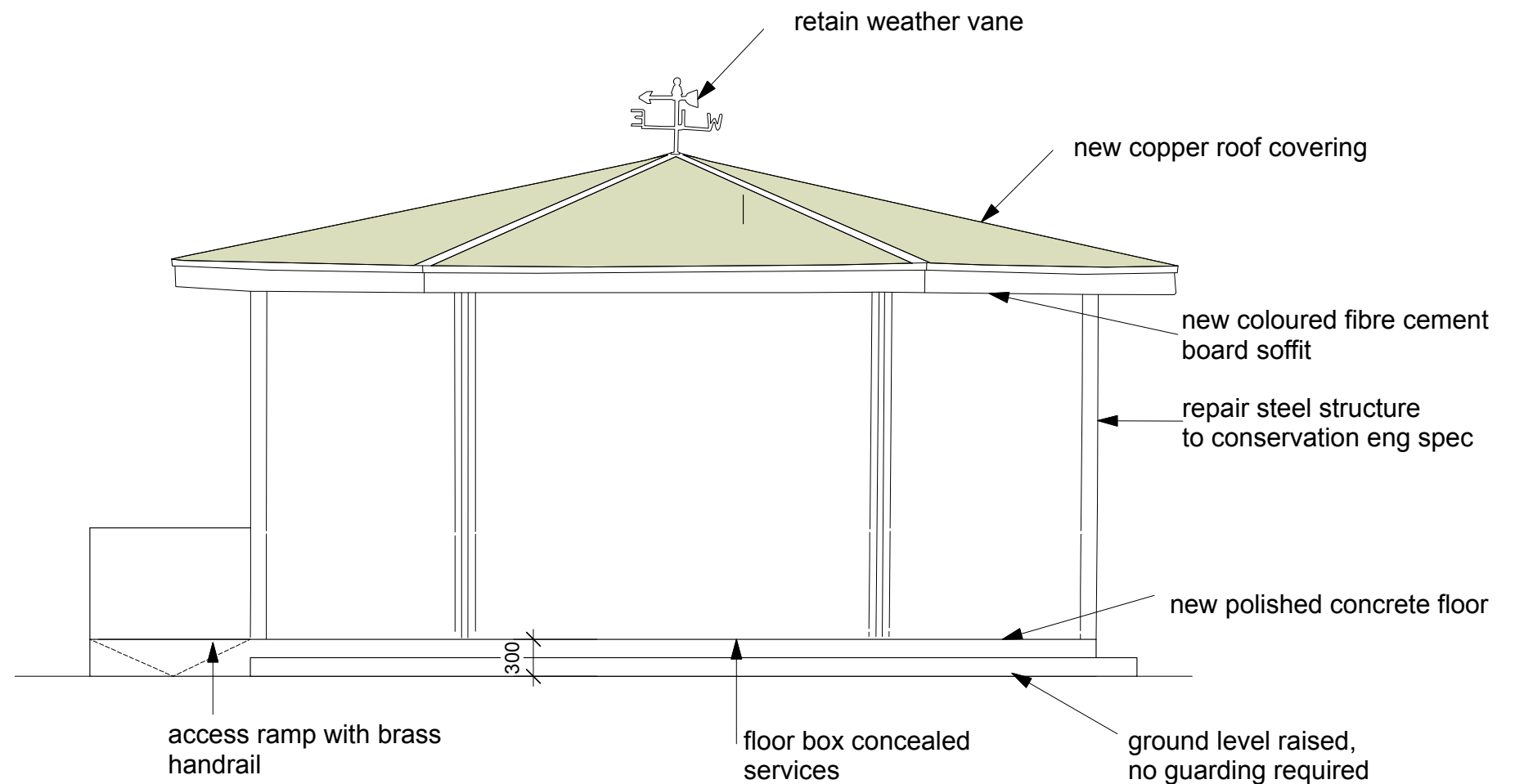
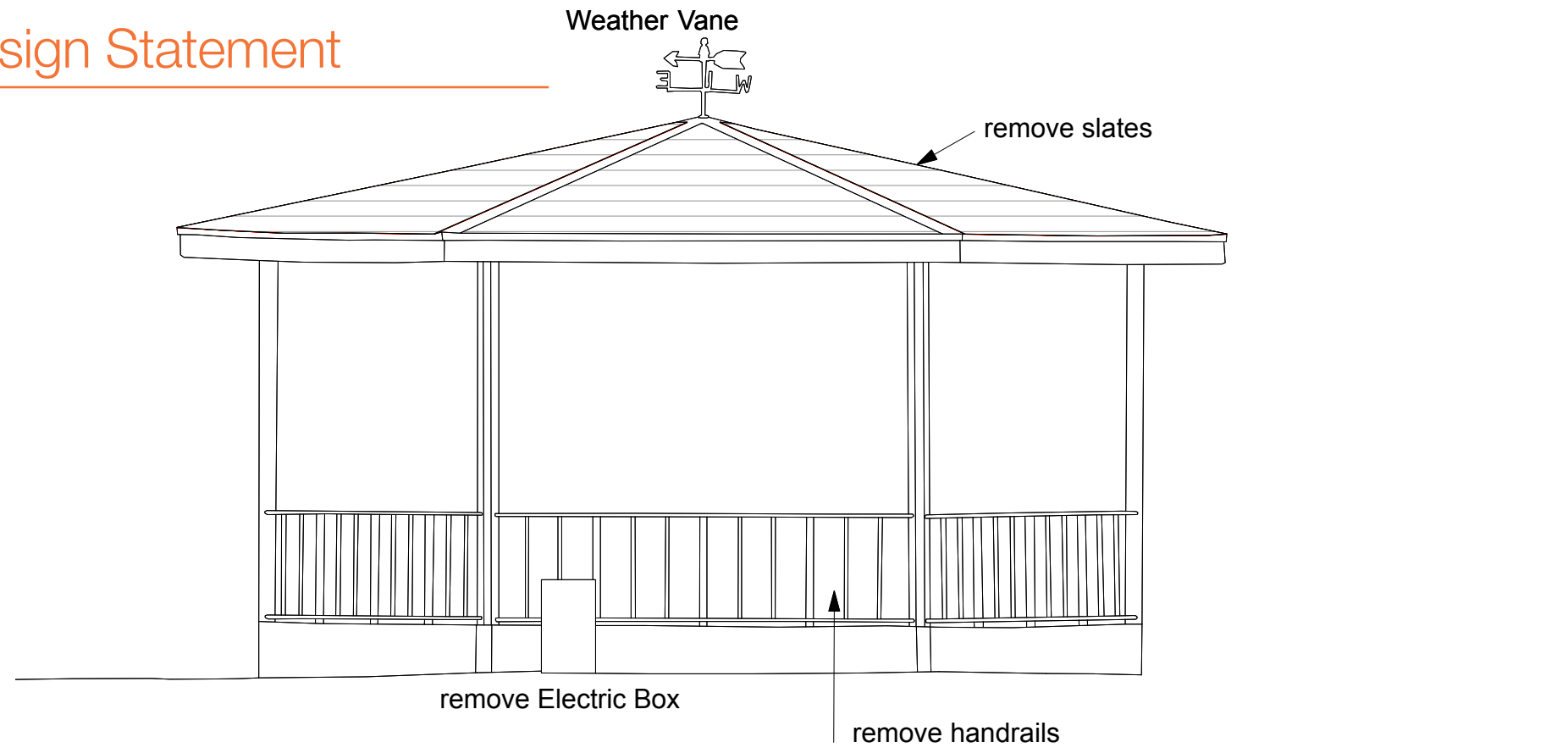
'The Plan' Redmond Square Design Statement

'THE PLAN'

FINAL PROPOSAL

Refurbishment proposal for the bandstand

Refer to DHA Drawing No. 00 004



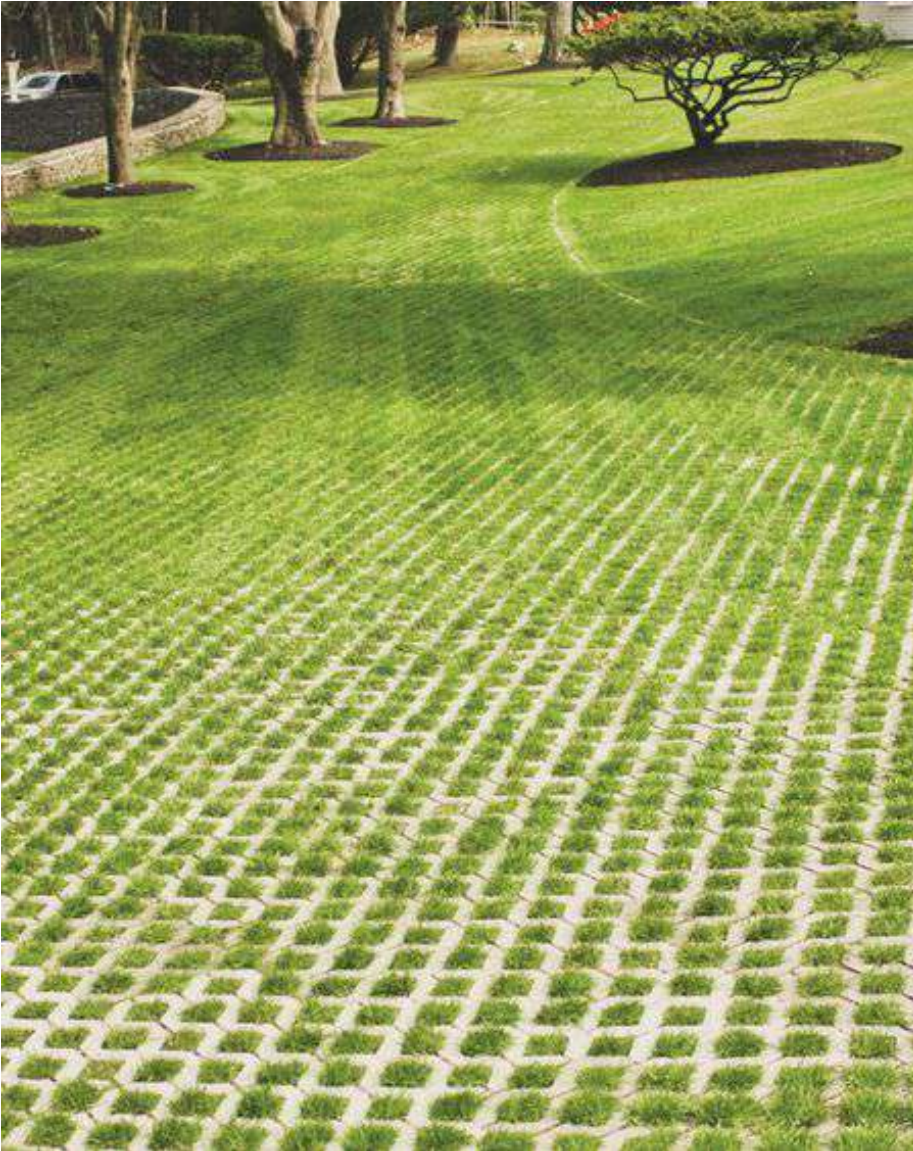
Bandstand Repair
Scale 1:50

'THE PLAN'

PALETTE OF MATERIALS



Limestone brick paving to hard landscaping and footpaths



Grasscrete - hardstanding in front of bandstand



Pigmented concrete raised beds & benches

'THE PLAN'

FEATURES & FURNITURE



Water feature - seen here at Emmet Square, Clonakilty



Bench seating building into raised beds



Bollard lighting



Lighting standard

*Final selection of lighting and street furniture to be agreed with the local authority prior to construction