

DRAWING IS PRODUCED USING THE IRISH TRANSVERSE MERCATOR (ITM) GEOGRAPHIC COORDINATE SYSTEM **A1**

CLIENT  
 Comhairle Contae Thiobraid Árann  
 Tipperary County Council

ARCHITECTS  
 dhbarchitects  
 ARCHITECTS

ARCHAEOLOGISTS  
 CourtneyDeery  
 ARCHAEOLOGY & CULTURAL HERITAGE

BRIDGES  
 MARC MURRAIN  
 ARCHITECTURE  
 INGÉNIERIE

ENGINEERS  
 Clifton Scannell Emerson  
 Associates

ENVIRONMENTAL CONSULTANTS  
 awnconsulting  
 A Trinity Consultants Company

ENVIRONMENTAL CONSULTANTS  
 Clifton Scannell Emerson  
 Associates

LIGHTING CONSULTANTS  
 Douglas Carroll  
 Consulting Engineers

- LEGEND :
- SITE BOUNDARY
  - PEDESTRIAN BRIDGES - STEEL STRUCTURE - BUSH - HAMMERED CONCRETE FINISH LAID ON A WATERPROOF SURFACE
  - VARIOUS SIZES OF STONE PAVING TO FOOTPATH (LIGHT GREY GRANITE AND / OR SANDSTONE)
  - STONE AGGREGATE PAVING TO FOOTPATH (SILVER / SANDSTONE)
  - ASPHALT FINISH TO ROAD & SHARED SURFACE
  - STONE AGGREGATE FINISH TO THE SHARED SURFACE FOR PEDESTRIANS AND BICYCLES (BEIGE/WHITE/LIGHT GREY)
  - EXPOSED STONE AGGREGATE FINISH TO STEPS AND RAMP (BEIGE/WHITE/LIGHT GREY)
  - GRASSED AND PLANTED AREAS
  - TACTILE SURFACE TO PEDESTRIAN CROSSINGS
  - STONE KERBS TO FOOTPATH
  - STONE KERBS TO PLANTER BED
  - EXISTING PATH LINE
  - SELECTED BOLLARD
  - PROPOSED PLANTING (SHRUBS / WILDFLOWER)
  - PROPOSED TREE:  
 BIG TREE-SALIX ALBA / SWEETGUM / RED MAPLE  
 MEDIUM TREE-RIVER BIRCH / ALNUS GLUTINOSA / BETULA PUBESCENS  
 CARPINUS BETULUS SMALL TREE-CRATAEGUS
  - EXISTING TREE

Rev	Description	Drawn	Checked	Date
PL02	ISSUED FOR PLANNING RFI RESPONSE	FO	LP	06.08.24
PL01	ISSUED FOR PLANNING	FO	LP	22.09.23

Rev	Description	Drawn	Checked	Date
PL02	ISSUED FOR PLANNING RFI RESPONSE	FO	LP	06.08.24
PL01	ISSUED FOR PLANNING	FO	LP	22.09.23

Clifton Scannell Emerson  
 Associates  
 Consulting Engineers,  
 3rd Floor The Highline,  
 Bakers Point, Pottery Road,  
 Dun Laoghaire, Co. Dublin,  
 Ireland, A96 KW29  
 T. +353 1 288 5006  
 F. +353 1 283 3466  
 E. info@csea.ie  
 W. www.csea.ie

TIPPERARY  
 COUNTY COUNCIL  
 Client

SUIR ISLAND  
 INFRASTRUCTURE LINKS  
 Project

OVERALL OPTION 02  
 PLAN  
 Dwg. Title

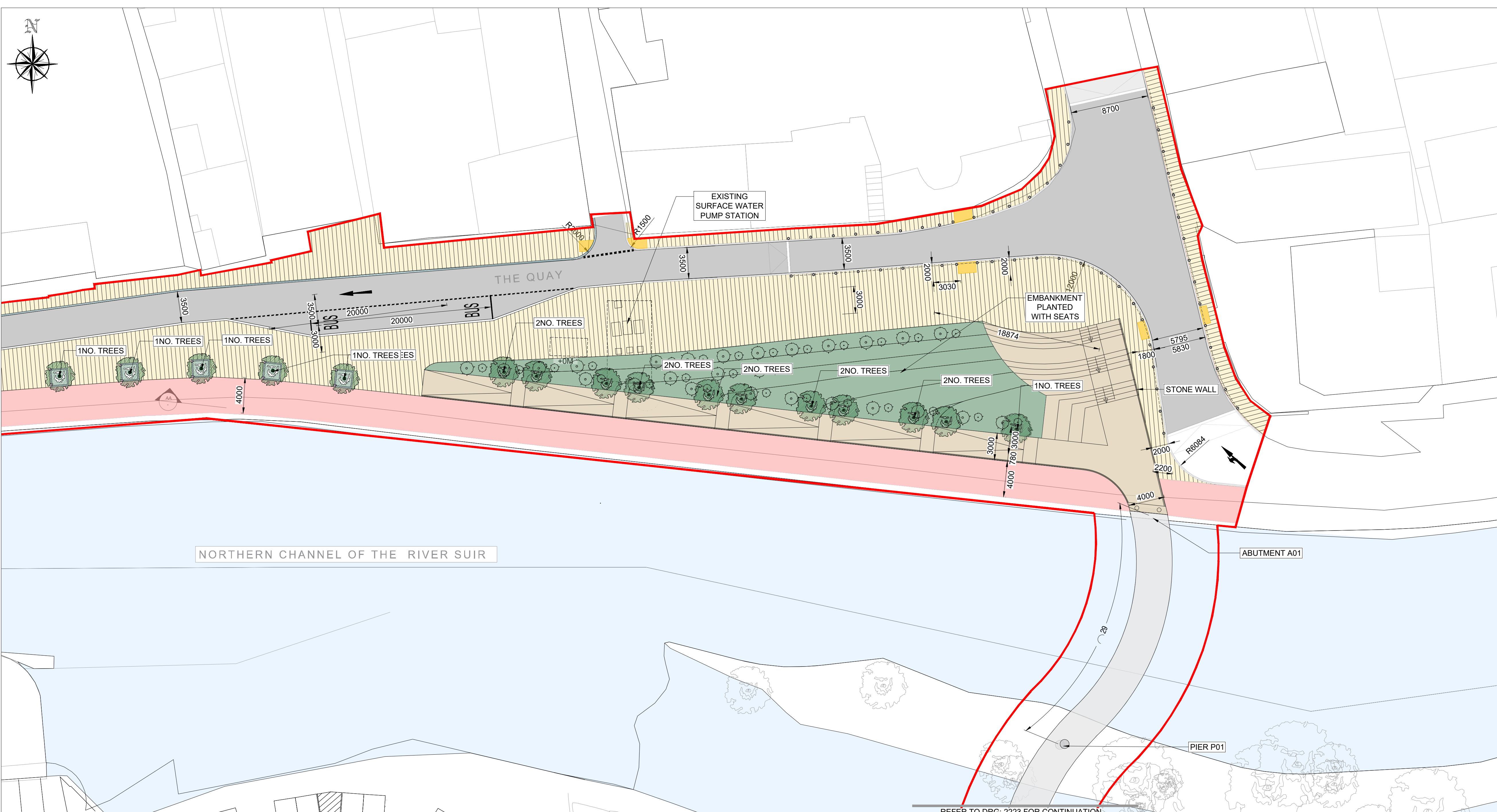
Drawn By: FO Date: SEPT 2023  
 Checked By: LP Scale: 1:1000 @ A1  
 Project Code: Originator: Phase: Level: Type: Role: Dwg. No. 20\_071  
 CSEA Job No.

20\_071 - CSE - GEN - XX - DR - C - 2220

S2 SUITABLE FOR INFORMATION  
 Status Code Suitability Description

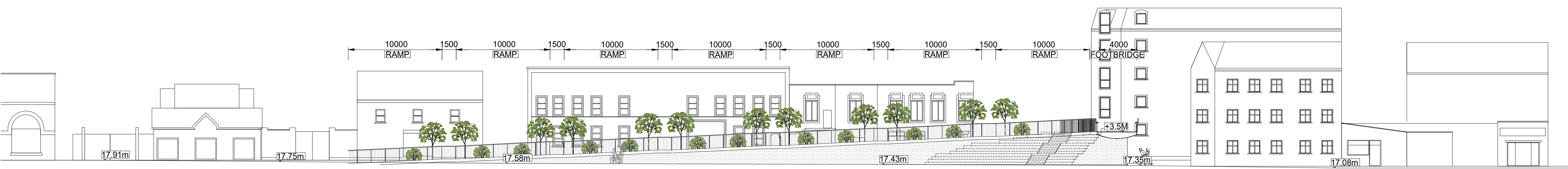
PL02 ISSUED FOR PLANNING  
 Revision Project Status





PLAZA - PLAN  
SCALE 1:250

REFER TO DRG. 2223 FOR CONTINUATION



DRAWING IS PRODUCED USING THE IRISH TRANSVERSE MERCATOR (ITM) GEOGRAPHIC COORDINATE SYSTEM

A1

CLIENT  
Comhairle Contae Thiobraid Árann  
Tipperary County Council

ARCHITECTS  
dhbarchitects  
ARCHAEOLOGISTS  
CourtneyDeery  
ARCHAEOLOGY & CULTURAL HERITAGE

BRIDGES  
MARC MIMRAM ARCHITECTURE INGÉNIÉRIE  
ENGINEERS  
Clifton Scannell Emerson Associates

ENVIRONMENTAL CONSULTANTS  
awnconsulting  
A Trinity Consultants Company

LIGHTING CONSULTANTS  
Douglas Carroll  
Consulting Engineers

- LEGEND :
- SITE BOUNDARY
  - PEDESTRIAN BRIDGES - STEEL STRUCTURE - BUSH - HAMMERED CONCRETE FINISH LAID ON A WATERPROOF SURFACE
  - VARIOUS SIZES OF STONE PAVING TO FOOTPATH (LIGHT GREY GRANITE AND / OR SANDSTONE)
  - STONE AGGREGATE PAVING TO FOOTPATH (SILVER / SANDSTONE)
  - ASPHALT FINISH TO ROAD & SHARED SURFACE
  - STONE AGGREGATE FINISH TO THE SHARED SURFACE FOR PEDESTRIANS AND BICYCLES (BEIGE/WHITE/LIGHT GREY)
  - EXPOSED STONE AGGREGATE FINISH TO STEPS AND RAMP (BEIGE/WHITE/LIGHT GREY)
  - GRASSED AND PLANTED AREAS
  - TACTILE SURFACE TO PEDESTRIAN CROSSINGS
  - STONE KERBS TO FOOTPATH
  - STONE KERBS TO PLANTER BED
  - EXISTING PATH LINE
  - EXISTING PATH LINE
  - SELECTED BOLLARD
  - PROPOSED PLANTING (SHRUBS / WILDFLOWER)
  - PROPOSED TREE:  
BIG TREE-SALIX ALBA / SWEETGUM / RED MAPLE  
MEDIUM TREE-RIVER BIRCH / ALNUS GLUTINOSA / BETULA PUBESCENS  
CARPINUS BETULUS SMALL TREE-CRATAEGUS
  - EXISTING TREE

PL02	ISSUED FOR PLANNING RFI RESPONSE	FO	LP	06.08.24
PL01	ISSUED FOR PLANNING	FO	LP	22.09.23

Rev	Description	Drawn	Checked	Date

Clifton Scannell Emerson Associates Limited  
Consulting Engineers,  
3rd Floor The Signline,  
Bakers Point, Pottery Road,  
Dun Laoghaire, Co. Dublin,  
Ireland, A96 KW29  
T. +353 1 288 5006  
F. +353 1 283 3466  
E. info@csea.ie  
W. www.csea.ie

TIPPERARY COUNTY COUNCIL  
Client  
SUIR ISLAND INFRASTRUCTURE LINKS  
Project  
OPTION 02 NORTH PLAZA  
PLAN & SECTION AA  
Dwg. Title

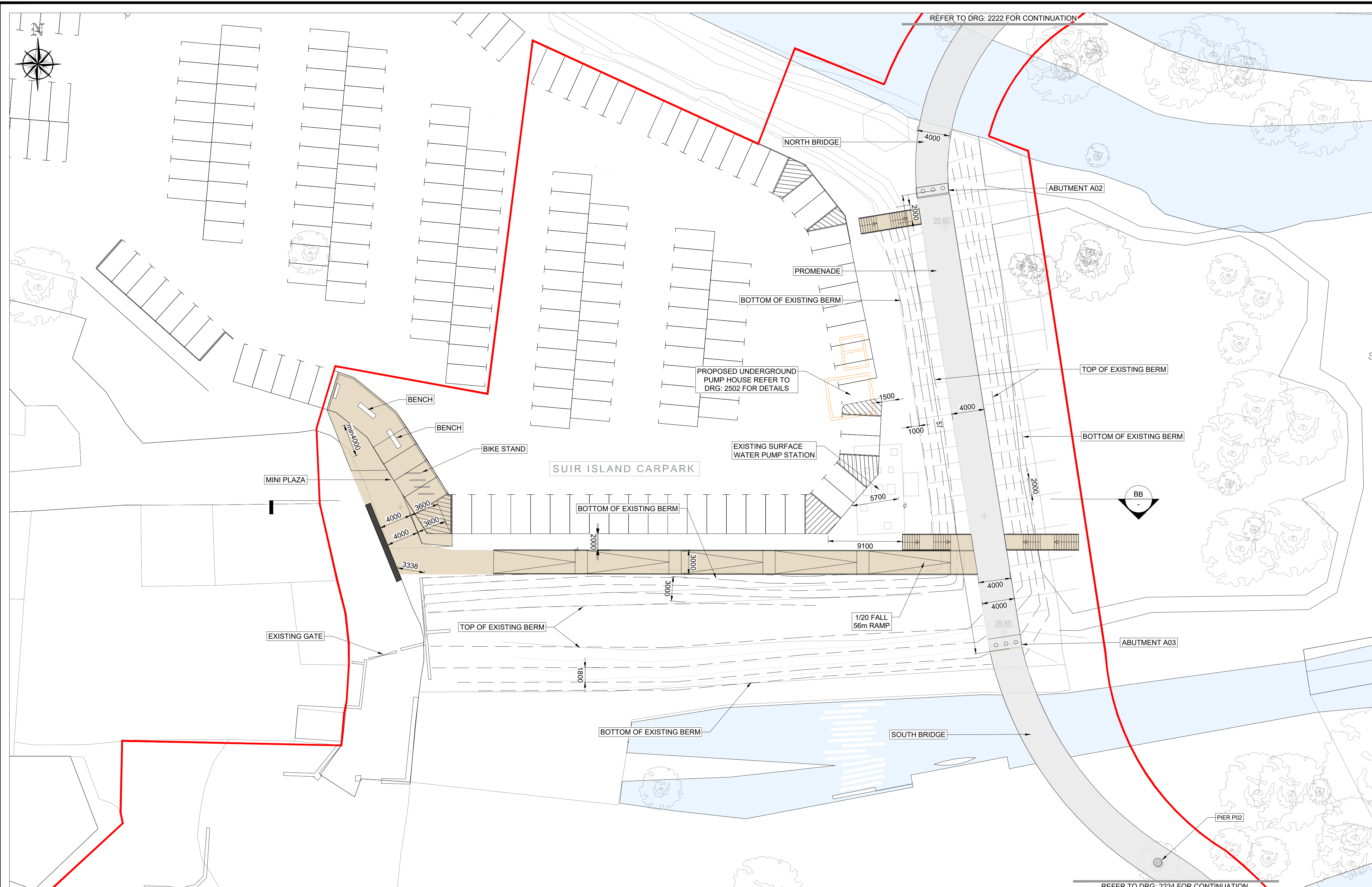
Drawn By FO Date SEPT 2023  
Checked By LP Scale 1:250 @ A1  
20\_071  
CSEA Job No.

Project Code	Originator	Zone/Phase	Level	Type	Role	Dwg. No.
20_071	CSE	GEN	XX	DR	C	2222

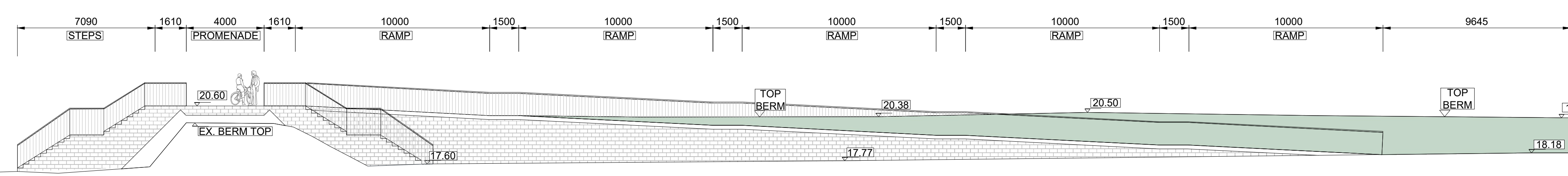
S2 SUITABLE FOR INFORMATION  
Status Code Suitability Description

PL02 ISSUED FOR PLANNING  
Revision Project Status





CARPARK - PLAN  
SCALE 1:250



DRAWING IS PRODUCED USING THE IRISH TRANSVERSE MERCATOR (ITM) GEOGRAPHIC COORDINATE SYSTEM **A1**

CLIENT: Comhairle Contae Thiobraid Árann  
Tipperary County Council

ARCHITECTS: dhbarchitects ARCHITECTS  
ARCHAEOLOGISTS: CourtneyDeery  
ARCHAEOLOGY & CULTURAL HERITAGE

BRIDGES: MARC MIMRAM ARCHITECTURE INGÉNIÉRIE  
ENGINEERS: Clifton Scannell Emerson Associates

ENVIRONMENTAL CONSULTANTS: awnconsulting  
A Trilby Consultants Company

LIGHTING CONSULTANTS: Douglas Carroll  
Consulting Engineers

LEGEND:

- SITE BOUNDARY
- PEDESTRIAN BRIDGES - STEEL STRUCTURE - BUSH - HAMMERED CONCRETE FINISH LAID ON A WATERPROOF SURFACE
- VARIOUS SIZES OF STONE PAVING TO FOOTPATH (LIGHT GREY GRANITE AND / OR SANDSTONE)
- STONE AGGREGATE PAVING TO FOOTPATH (SILVER / SANDSTONE)
- ASPHALT FINISH TO ROAD & SHARED SURFACE
- STONE AGGREGATE FINISH TO THE SHARED SURFACE FOR PEDESTRIANS AND BICYCLES (BEIGE/WHITE/LIGHT GREY)
- EXPOSED STONE AGGREGATE FINISH TO STEPS AND RAMP (BEIGE/WHITE/LIGHT GREY)
- GRASSED AND PLANTED AREAS
- TACTILE SURFACE TO PEDESTRIAN CROSSINGS
- STONE KERBS TO FOOTPATH
- STONE KERBS TO PLANTER BED
- EXISTING PATH LINE
- EXISTING PATH LINE
- SELECTED BOLLARD
- PROPOSED PLANTING (SHRUBS / WILDFLOWER)
- PROPOSED TREE: BIG TREE-SALIX ALBA / SWEETGUM / RED MAPLE  
MEDIUM TREE-RIVER BIRCH / ALNUS GLUTINOSA / BETULA PUBESCENS  
CARPINUS BETULUS SMALL TREE-CRATAEGUS
- EXISTING TREE

PL02	ISSUED FOR PLANNING RFI RESPONSE	FO	LP	06.08.24
PL01	ISSUED FOR PLANNING	FO	LP	22.09.23

Rev	Description	Drawn	Checked	Date

Clifton Scannell Emerson Associates Limited  
Consulting Engineers,  
3rd Floor The Highline,  
Bakers Point, Pottery Road,  
Dun Laoghaire, Co. Dublin,  
Ireland, A96 KW29

T. +353 1 288 5006  
F. +353 1 283 3466  
E. info@csea.ie  
W. www.csea.ie

TIPPERARY COUNTY COUNCIL

Client: SUIR ISLAND INFRASTRUCTURE LINKS

Project: OPTION 02 SUIR ISLAND CARPARK ACCESS PLAN & SECTION BB

Dwg. Title: ACCESS PLAN & SECTION BB

Drawn By: FO Date: SEPT 2023  
Checked By: LP Scale: 1:150 @ A1

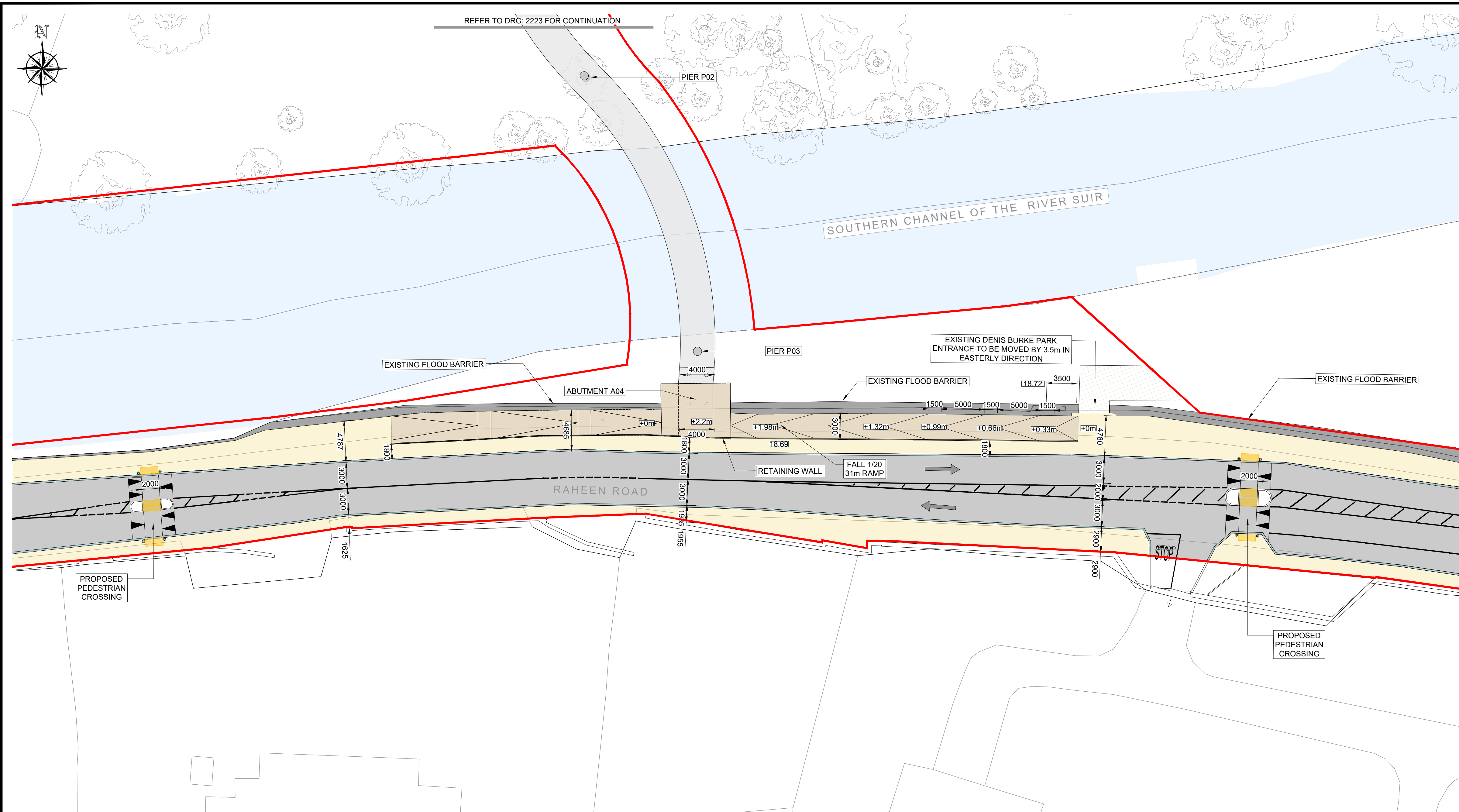
20\_071  
CSEA Job No.

Project Code	Originator	Zone/Phase	Level	Type	Role	Dwg. No.
20_071	CSE	GEN	XX	DR	C	2223

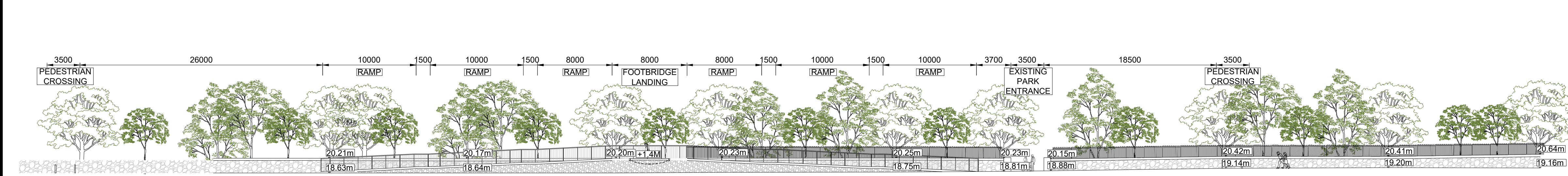
S2 SUITABLE FOR INFORMATION  
Status Code Suitability Description

PL02 ISSUED FOR PLANNING  
Revision Project Status





RAHEEN ROAD - PLAN  
SCALE 1:250



DRAWING IS PRODUCED USING THE IRISH TRANSVERSE MERCATOR (ITM) GEOGRAPHIC COORDINATE SYSTEM **A1**

CLIENT  
Comhairle Contae Thiobraid Árann  
Tipperary County Council

ARCHITECTS  
dhbarchitects

ARCHAEOLOGISTS  
CourtneyDeery  
ARCHAEOLOGY & CULTURAL HERITAGE

BRIDGES  
MARC MINRAM  
ARCHITECTURE  
INGÉNIERIE

ENGINEERS  
Clifton Scannell Emerson  
Associates

ENVIRONMENTAL CONSULTANTS  
awnconsulting  
A Tidy Consultants Company

LIGHTING CONSULTANTS  
Douglas Carroll  
Consulting Engineers

- LEGEND:
- SITE BOUNDARY
  - PEDESTRIAN BRIDGES - STEEL STRUCTURE - BUSH - HAMMERED CONCRETE FINISH LAID ON A WATERPROOF SURFACE
  - VARIOUS SIZES OF STONE PAVING TO FOOTPATH (LIGHT GREY GRANITE AND / OR SANDSTONE)
  - STONE AGGREGATE PAVING TO FOOTPATH (SILVER / SANDSTONE)
  - ASPHALT FINISH TO ROAD & SHARED SURFACE
  - STONE AGGREGATE FINISH TO THE SHARED SURFACE FOR PEDESTRIANS AND BICYCLES (BEIGE/WHITE/LIGHT GREY)
  - EXPOSED STONE AGGREGATE FINISH TO STEPS AND RAMP (BEIGE/WHITE/LIGHT GREY)
  - GRASSED AND PLANTED AREAS
  - TACTILE SURFACE TO PEDESTRIAN CROSSINGS
  - STONE KERBS TO FOOTPATH
  - STONE KERBS TO PLANTER BED
  - EXISTING PATH LINE
  - SELECTED BOLLARD
  - PROPOSED PLANTING (SHRUBS / WILDFLOWER)
  - PROPOSED TREE:  
BIG TREE - SALIX ALBA / SWEETGUM / RED MAPLE  
MEDIUM TREE - RIVER BIRCH / ALNUS GLUTINOSA / BETULA PUBESCENS  
SMALL TREE - CRATAEGUS
  - EXISTING TREE

Rev	Description	Drawn	Checked	Date
PL02	ISSUED FOR PLANNING RFI RESPONSE	FO	LP	06.08.24
PL01	ISSUED FOR PLANNING	FO	LP	22.09.23

Clifton Scannell Emerson  
Associates Limited  
Consulting Engineers,  
3rd Floor The Heights,  
Bakers Point, Pottory Road,  
Dun Laoighaire, Co. Dublin,  
Ireland, A96 KW29

T. +353 1 288 5008  
F. +353 1 283 3466  
E. info@csea.ie  
W. www.csea.ie

TIPPERARY  
COUNTY COUNCIL

Client

SUIR ISLAND  
INFRASTRUCTURE LINKS

Project

OPTION 02 SOUTH ARRIVAL  
PLAN & SECTION CC

Dwg. Title

Drawn By: FO Date: SEPT 2023

Checked By: LP Scale: 1:250 @ A1

20\_071

CSEA Job No.

Project Code Originator Zonal/Phase Level Type Role Dwg. No.

20\_071 - CSE - GEN - XX - DR - C - 2224

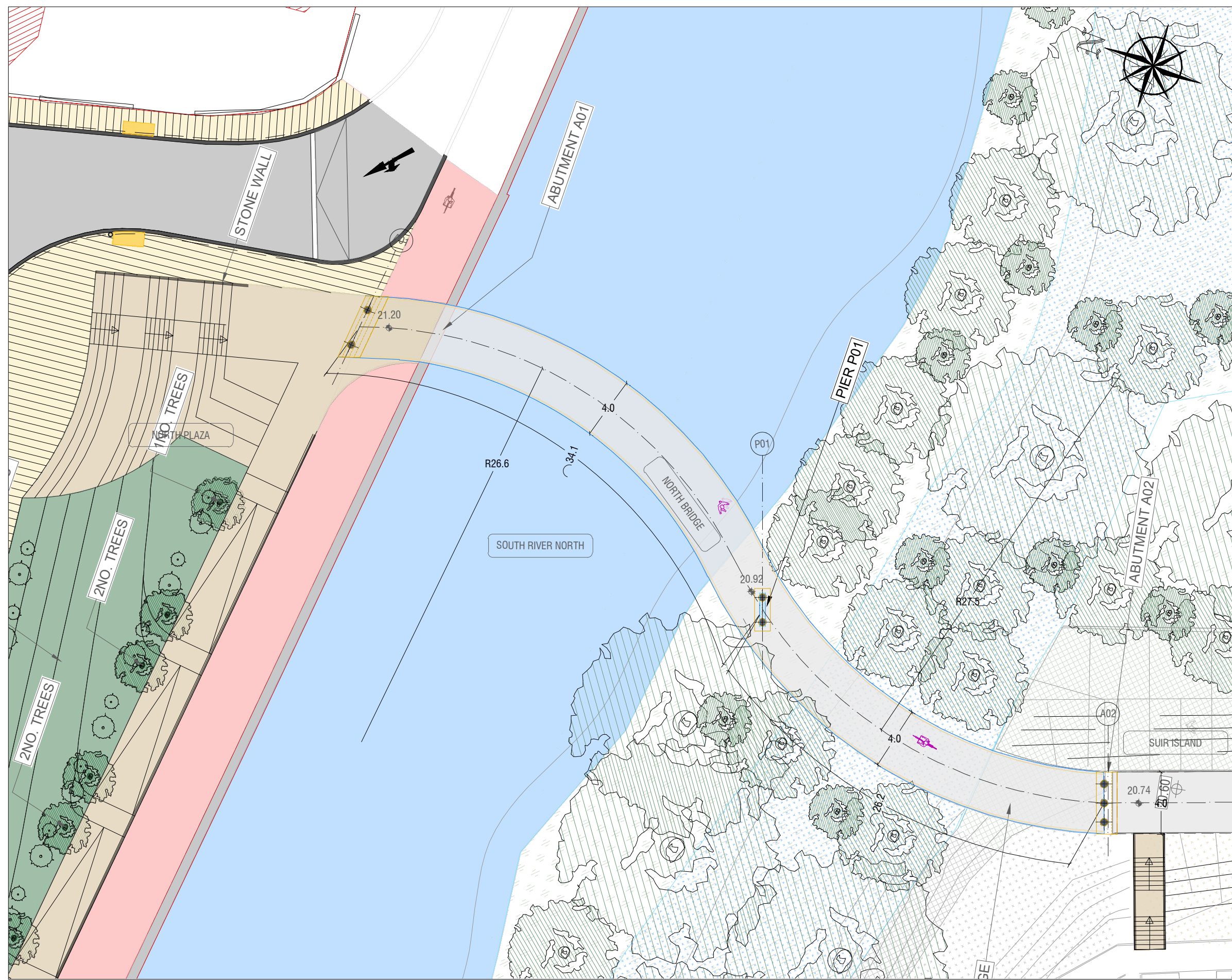
S2 SUITABLE FOR INFORMATION

Status Code Suitability Description

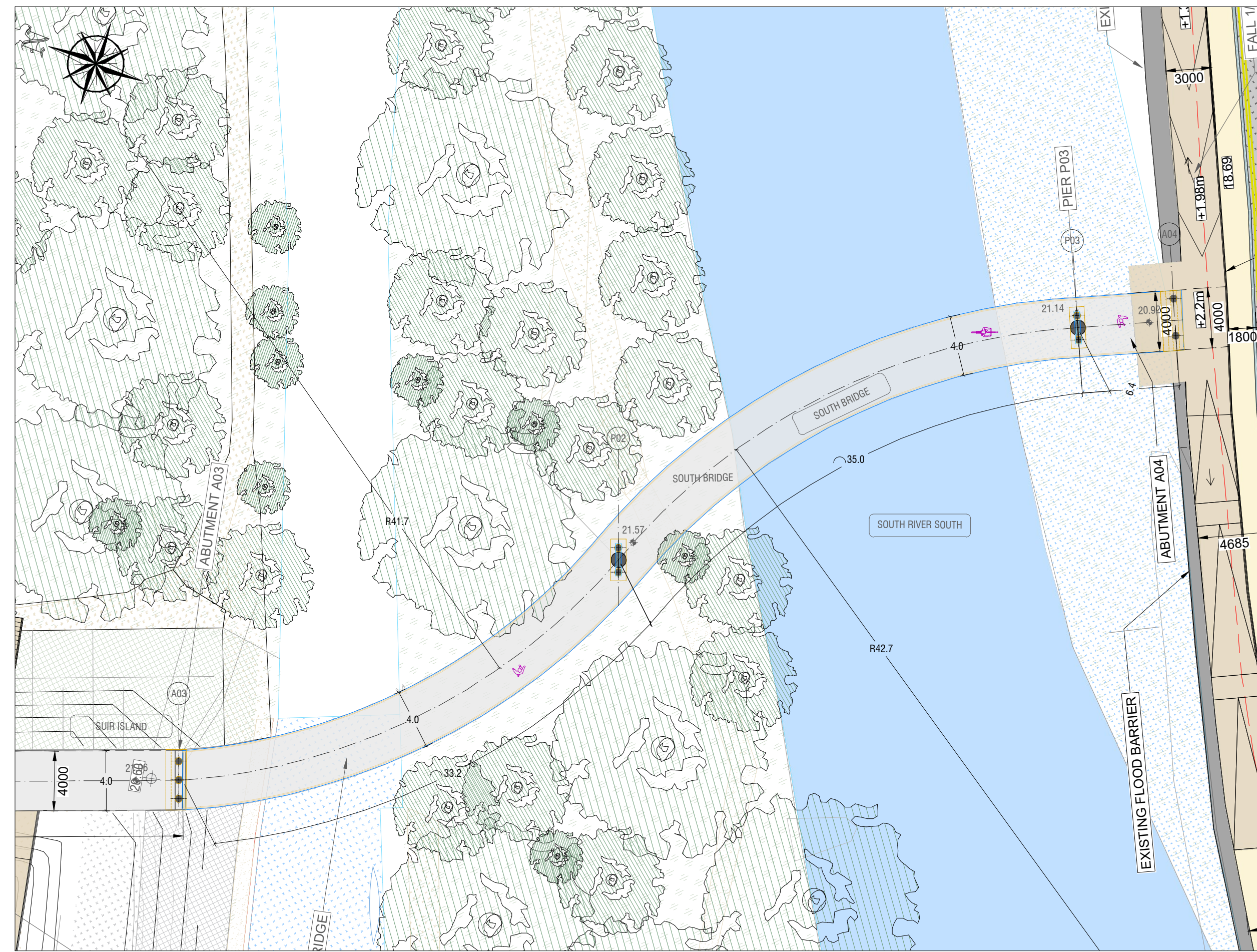
PL02 ISSUED FOR PLANNING

Revision Project Status

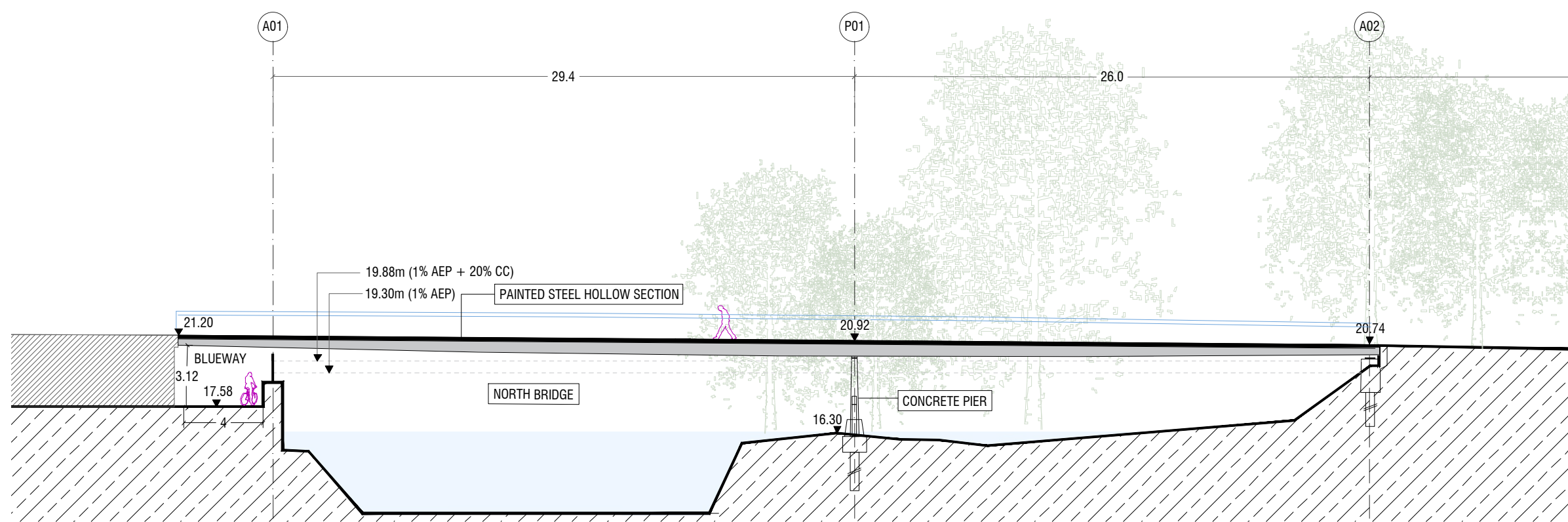




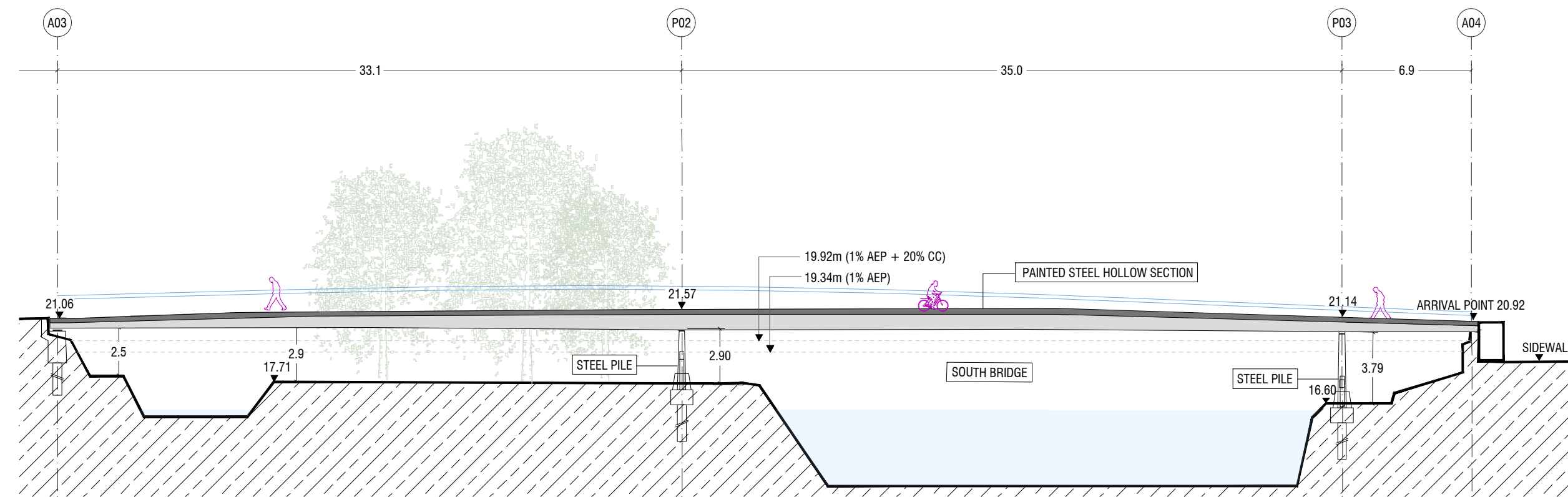
SITE PLAN NORTH BRIDGE 1/250



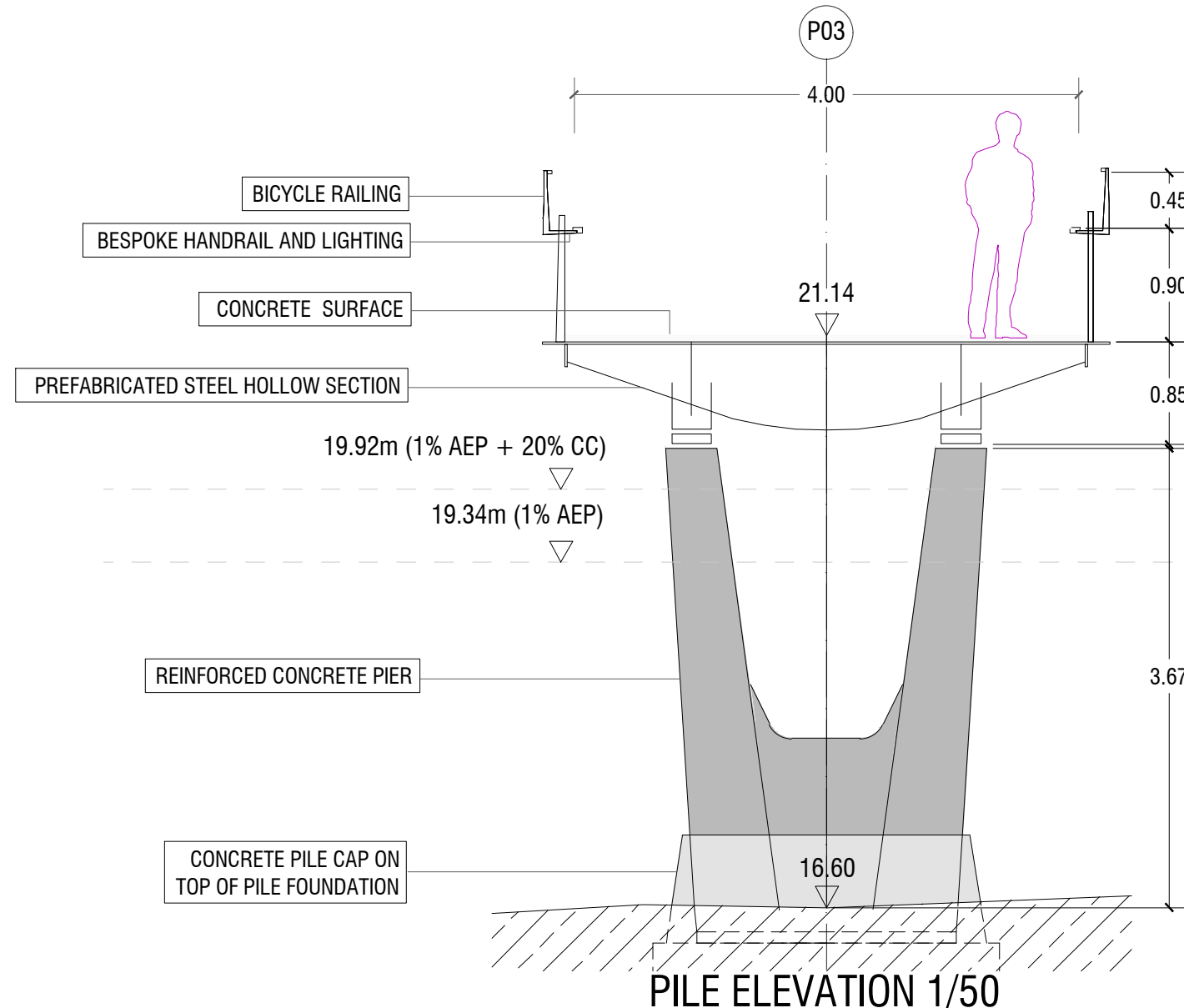
SITE PLAN SOUTH BRIDGE 1/250



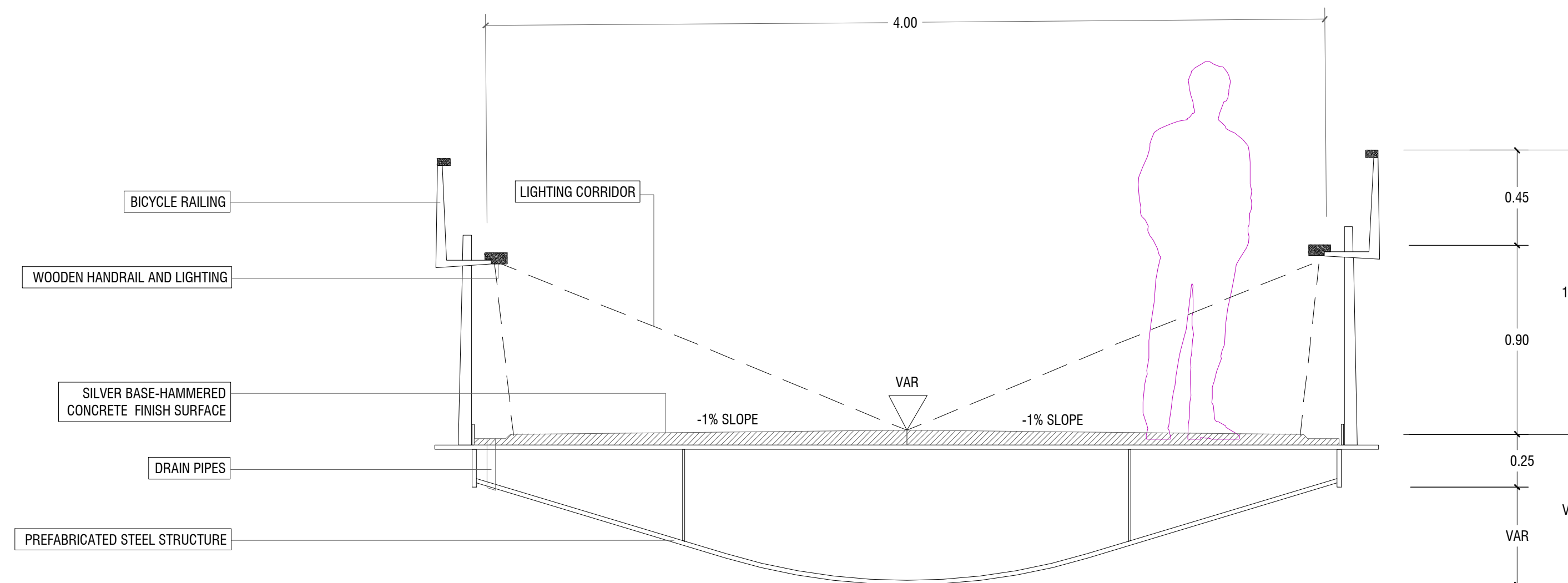
ELEVATION NORTH BRIDGE 1/250



ELEVATION SOUTH BRIDGE 1/250



PILE ELEVATION 1/50



TYPICAL SECTION 1/20

DRAWING IS PRODUCED USING THE IRISH TRANSVERSE MERCATOR (ITM) GEOGRAPHIC COORDINATE SYSTEM

A1

CLIENT  
 Comhairle Contae Thiobraid Árann  
 Tipperary County Council

ARCHITECTS  
 dhbarchitects  
 ARCHITECTS

ARCHAEOLOGISTS  
 CourtneyDeery  
 ARCHAEOLOGY & CULTURAL HERITAGE

BRIDGES  
 MARC MIMRAM ARCHITECTURE  
 INGÉNIERIE

ENGINEERS  
 Clifton Scannell Emerson  
 Associates

ENVIRONMENTAL CONSULTANTS  
 awnconsulting  
 A Triskley Companies Company

LIGHTING CONSULTANTS  
 Douglas Carroll  
 Consulting Engineers

NOTES:

AOX = ABUTMENT FOUNDATION NUMBER X  
 POX = PIER FOUNDATION NUMBER X

Rev	Description	Drawn	Checked	Date
PL02	ISSUED FOR PLANNING RFI RESPONSE	FO	LP	06.08.24
PL01	ISSUED FOR PLANNING	FO	LP	22.09.23

Clifton Scannell Emerson Associates Limited  
 Consulting Engineers,  
 3rd Floor The Highline,  
 Bakers Point, Pottery Road,  
 Dun Laoighaire, Co. Dublin,  
 Ireland, A96 KW29

T: +353 1 288 5006  
 F: +353 1 283 3468  
 E: info@csea.ie  
 W: www.csea.ie

TIPPERARY  
 COUNTY COUNCIL

Client  
 SUIR ISLAND  
 INFRASTRUCTURE LINKS

Project  
 OPTION 02 BRIDGE  
 PLAN & ELEVATIONS

Dwg. Title

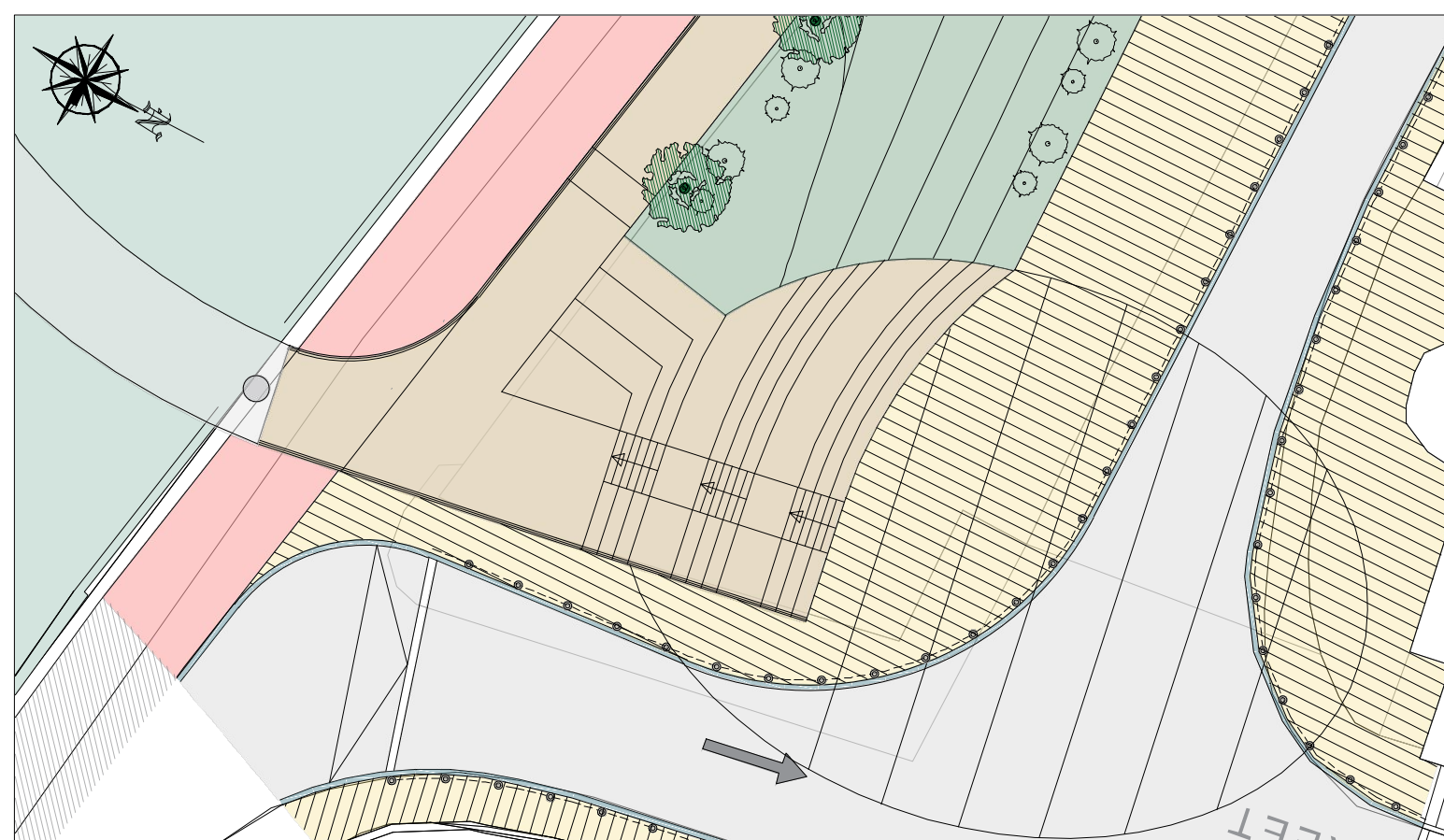
Drawn By: FO Date: SEPT 2023  
 Checked By: LP AS INDICATED @ A1 Scale: CSEA Job No. 20\_071

Project Code: 20\_071 - CSE - GEN - XX - DR - C - 2225

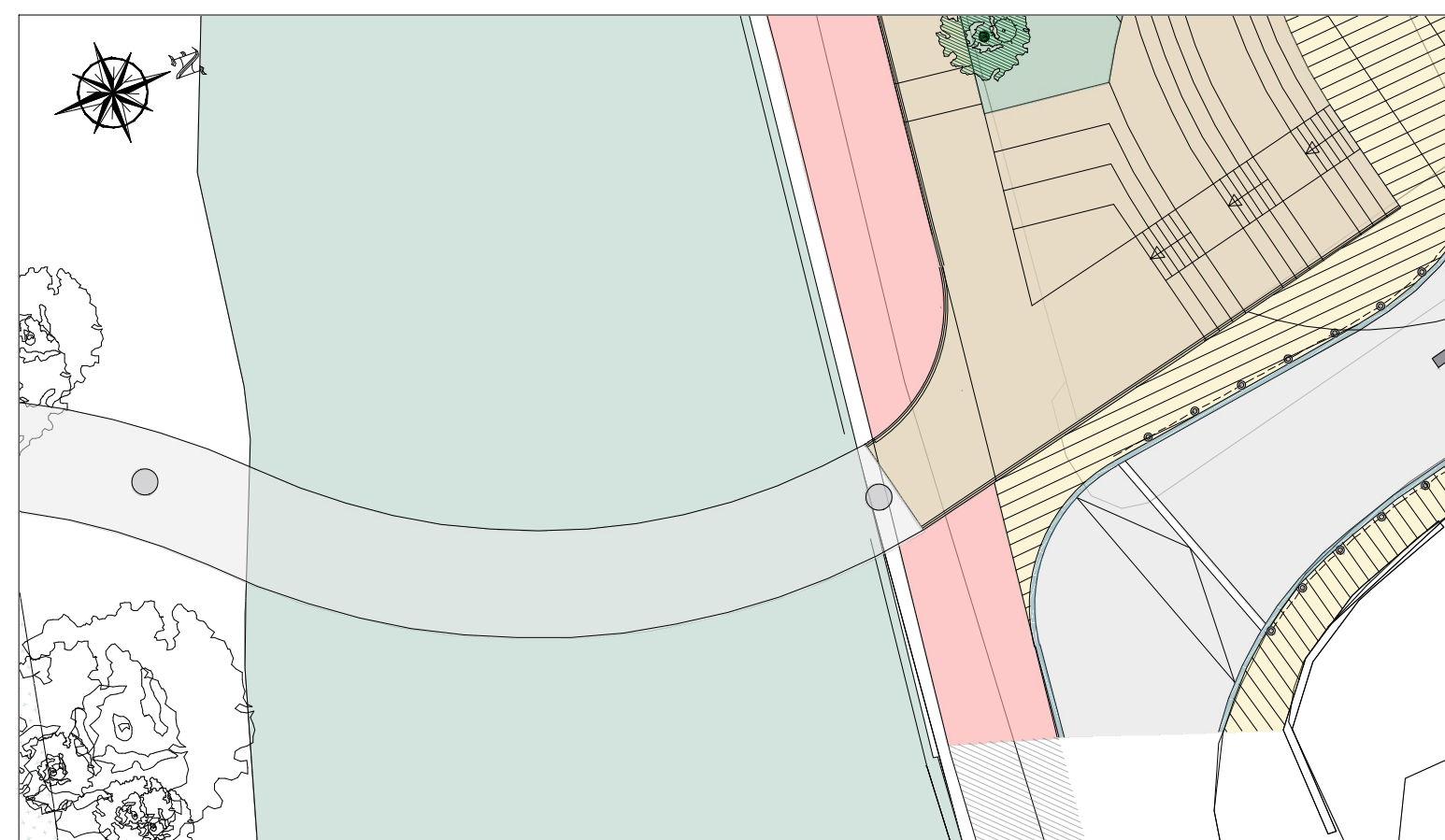
S2 SUITABLE FOR INFORMATION  
 Status Code Suitability Description

PL02 ISSUED FOR PLANNING  
 Revision Project Status

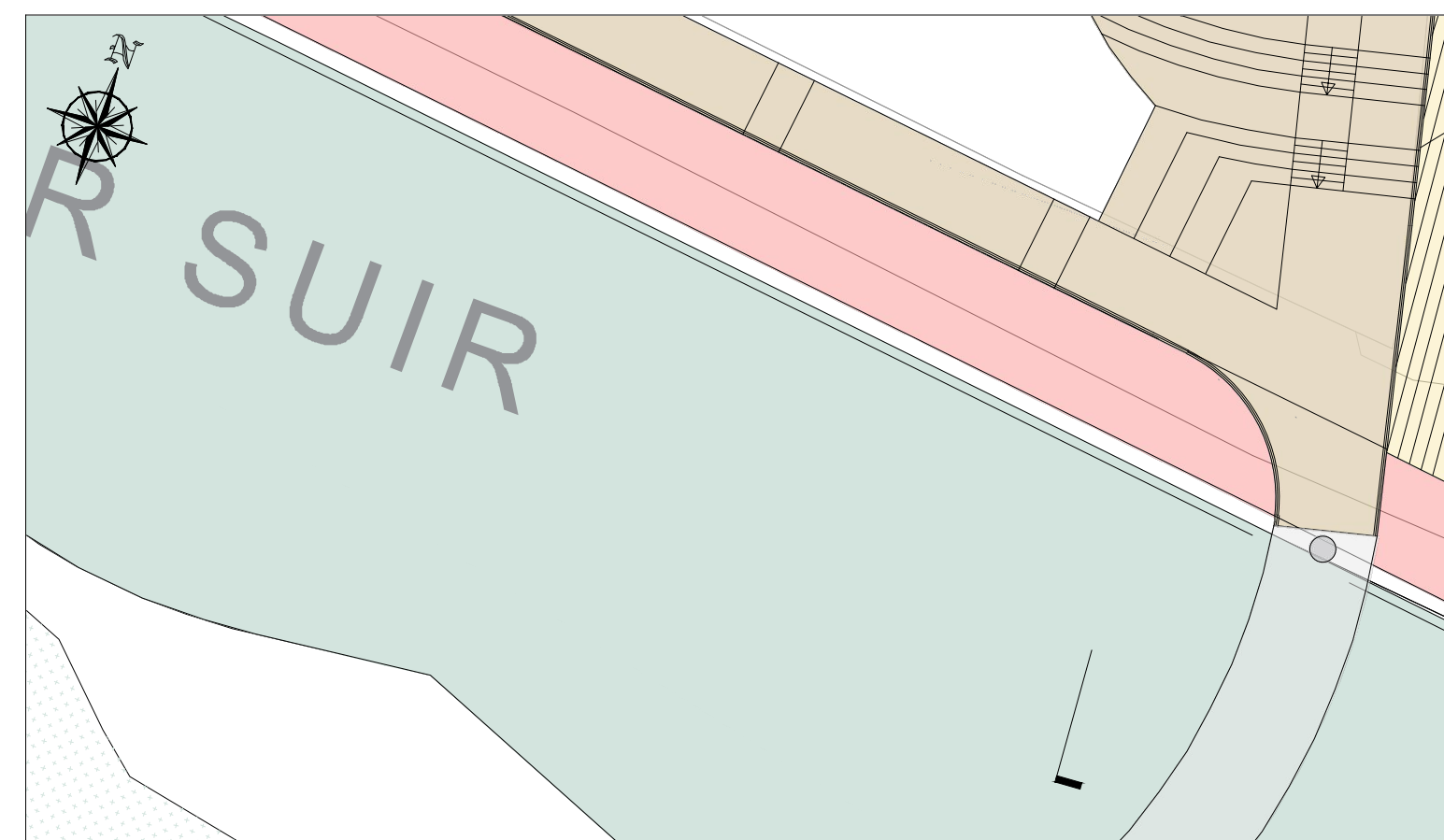




NORTH PLAZA PLAN - VIEW 01



NORTH PLAZA PLAN - VIEW 02



NORTH PLAZA PLAN - VIEW 03



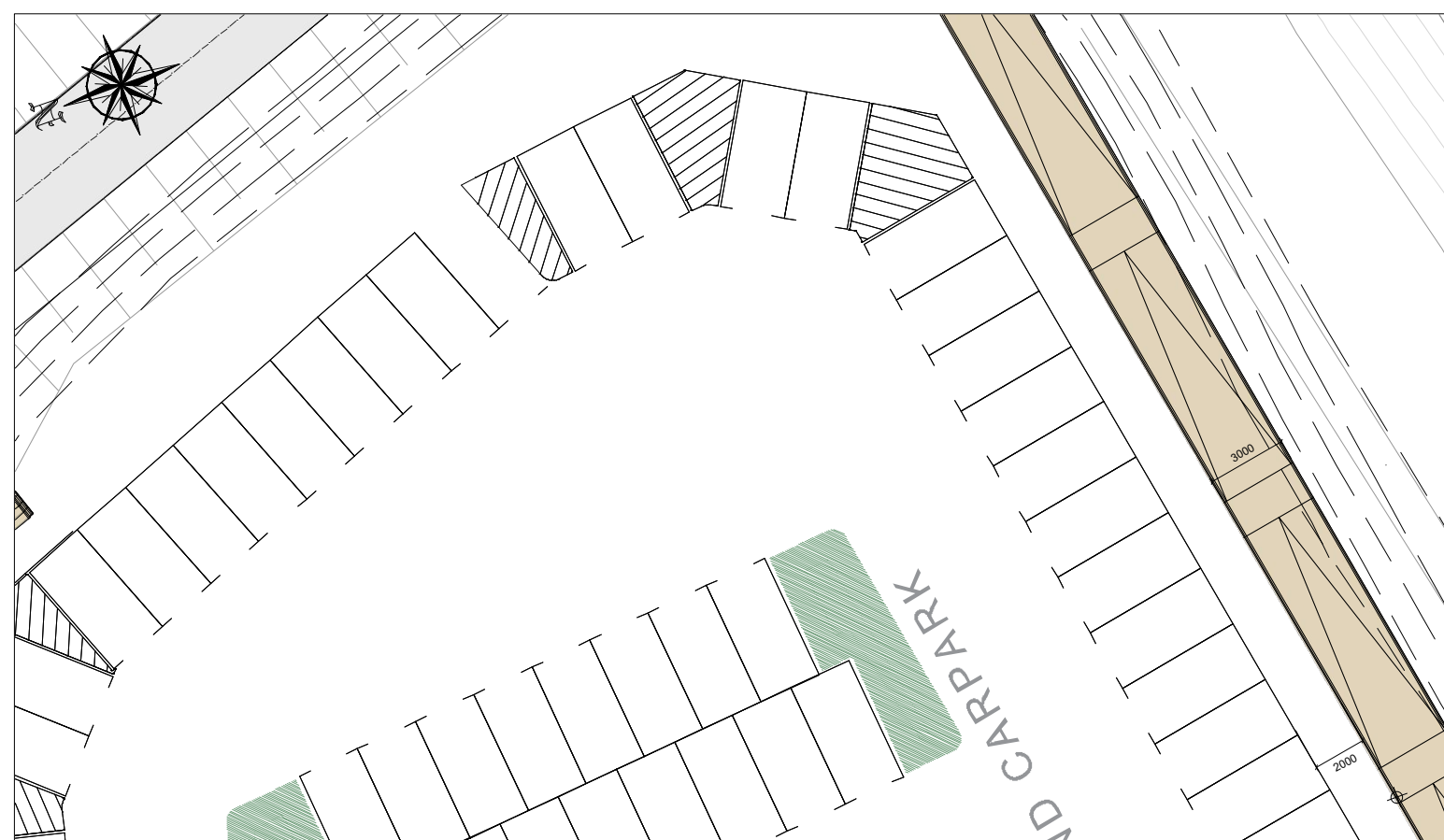
NORTH PLAZA 3D - VIEW 01



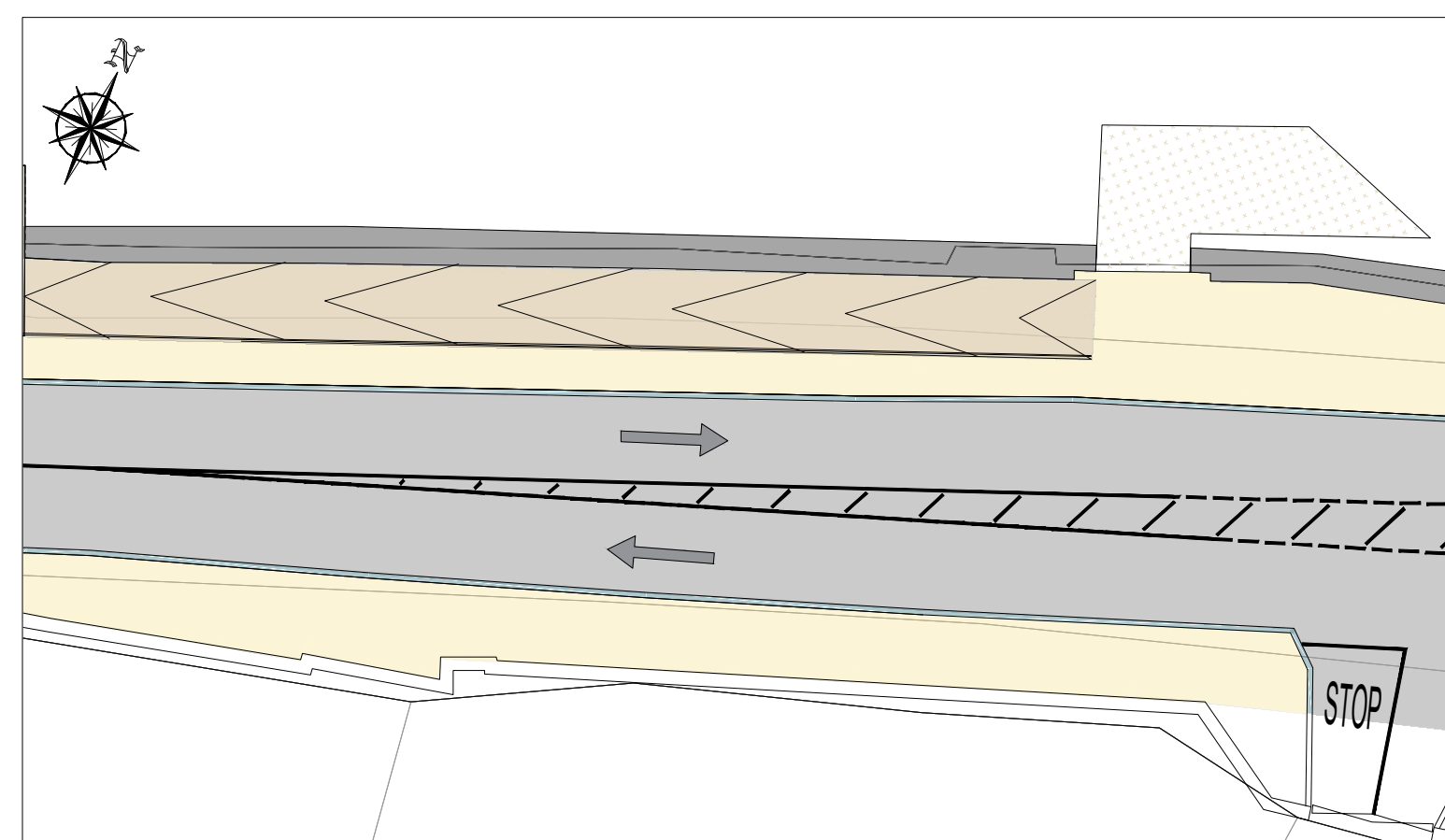
NORTH PLAZA 3D - VIEW 02



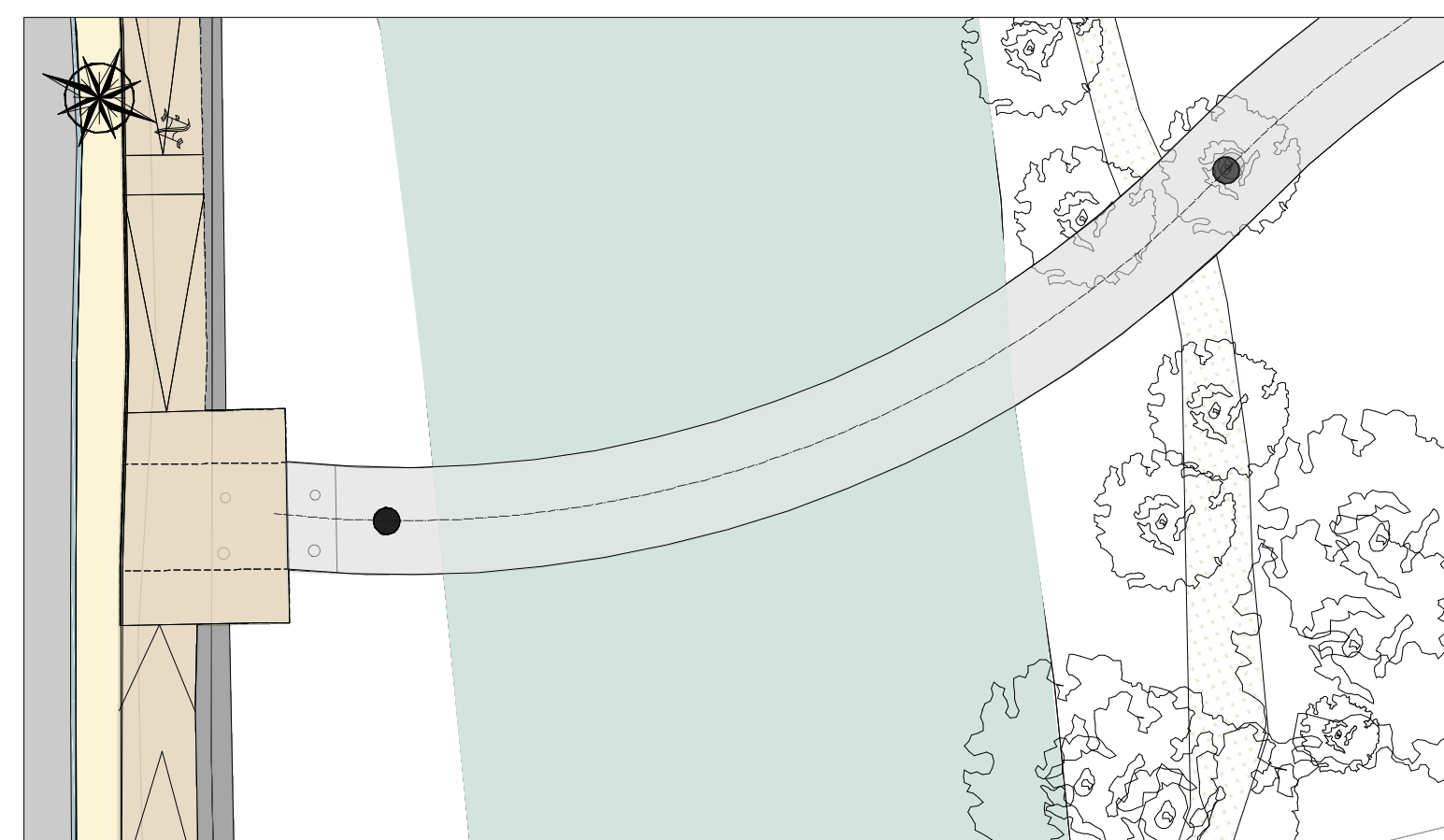
NORTH PLAZA 3D - VIEW 03



CARPARK PLAN - VIEW 01



SOUTH ARRIVAL POINT PLAN - VIEW 01



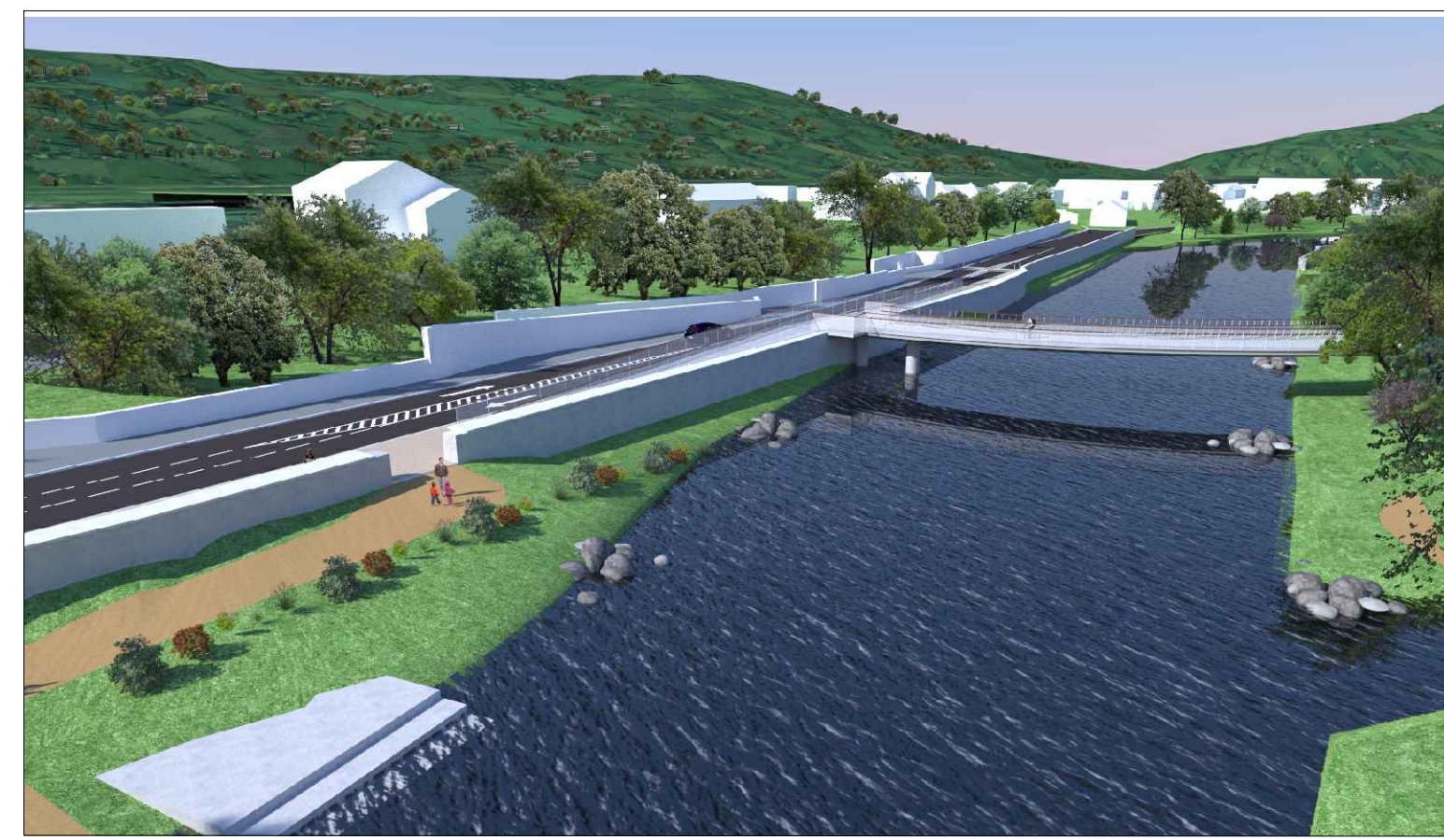
SOUTH ARRIVAL POINT PLAN - VIEW 02



CARPARK 3D - VIEW 01



SOUTH ARRIVAL POINT 3D - VIEW 01



SOUTH ARRIVAL POINT 3D - VIEW 02

DRAWING IS PRODUCED USING THE IRISH TRANSVERSE MERCATOR (ITM) GEOGRAPHIC COORDINATE SYSTEM

A1

CLIENT  
Comhairle Contae Thiobraid Árann  
Tipperary County Council

ARCHITECTS  
d**h**architects  
ARCHEOLOGISTS  
CourtneyDeery  
ARCHAEOLOGY & CULTURAL HERITAGE

BRIDGES  
MARC MURPHY ARCHITECTURE INGÉNIERIE  
ENGINEERS  
Clifton Scannell Emerson Associates

ENVIRONMENTAL CONSULTANTS  
awnconsulting  
A Tidy Consultants Company

LIGHTING CONSULTANTS  
Douglas Carroll  
Consulting Engineers

Rev	Description	Drawn	Checked	Date
PL02	ISSUED FOR PLANNING RFI RESPONSE	FO	LP	06.08.24
PL01	ISSUED FOR PLANNING	FO	LP	22.09.23

Clifton Scannell Emerson Associates Limited  
Consulting Engineers,  
3rd Floor The Highline,  
Bakers Point, Pottery Road,  
Dun Laoghaire, Co. Dublin,  
Ireland, A96 KW29  
T: +353 1 288 5006  
F: +353 1 283 3466  
E: info@csea.ie  
W: www.csea.ie

TIPPERARY COUNTY COUNCIL  
SUIR ISLAND INFRASTRUCTURE LINKS  
OPTION 02  
3D VIEWS

Client: TIPPERARY COUNTY COUNCIL  
Project: SUIR ISLAND INFRASTRUCTURE LINKS  
Dwg. Title: OPTION 02 3D VIEWS  
Drawn By: FO Date: SEPT 2023  
Checked By: LP Scale: N.T.S @ A1

Project Code: 20\_071 - CSE - GEN - XX - DR - C - 2226  
Originator: CSEA Job No. 20\_071

S2 SUITABLE FOR INFORMATION  
Status Code: S2 Suitability Description: SUITABLE FOR INFORMATION

PL01 ISSUED FOR PLANNING  
Revision: PL01 Project Status: ISSUED FOR PLANNING