

DRAWING IS PRODUCED USING THE IRISH TRANSVERSE MERCATOR (ITM) GEOGRAPHIC COORDINATE SYSTEM **A1**

**CLIENT**  
 Comhairle Contae Thiobraid Árann  
 Tipperary County Council

**ARCHITECTS** **ARCHEOLOGISTS**  
 dhbarchitects CourtneyDeery  
 ARCHITECTURE & CULTURAL HERITAGE

**BRIDGES** **ENGINEERS**  
**MARC MIRRAM** ARCHITECTURE INGÉNIERIE  
 Clifton Scannell Emerson Associates

**ENVIRONMENTAL CONSULTANTS**  
 awnconsulting  
 A Trinity Consultants Company

**LIGHTING CONSULTANTS**  
 Douglas Carroll  
 Consulting Engineers

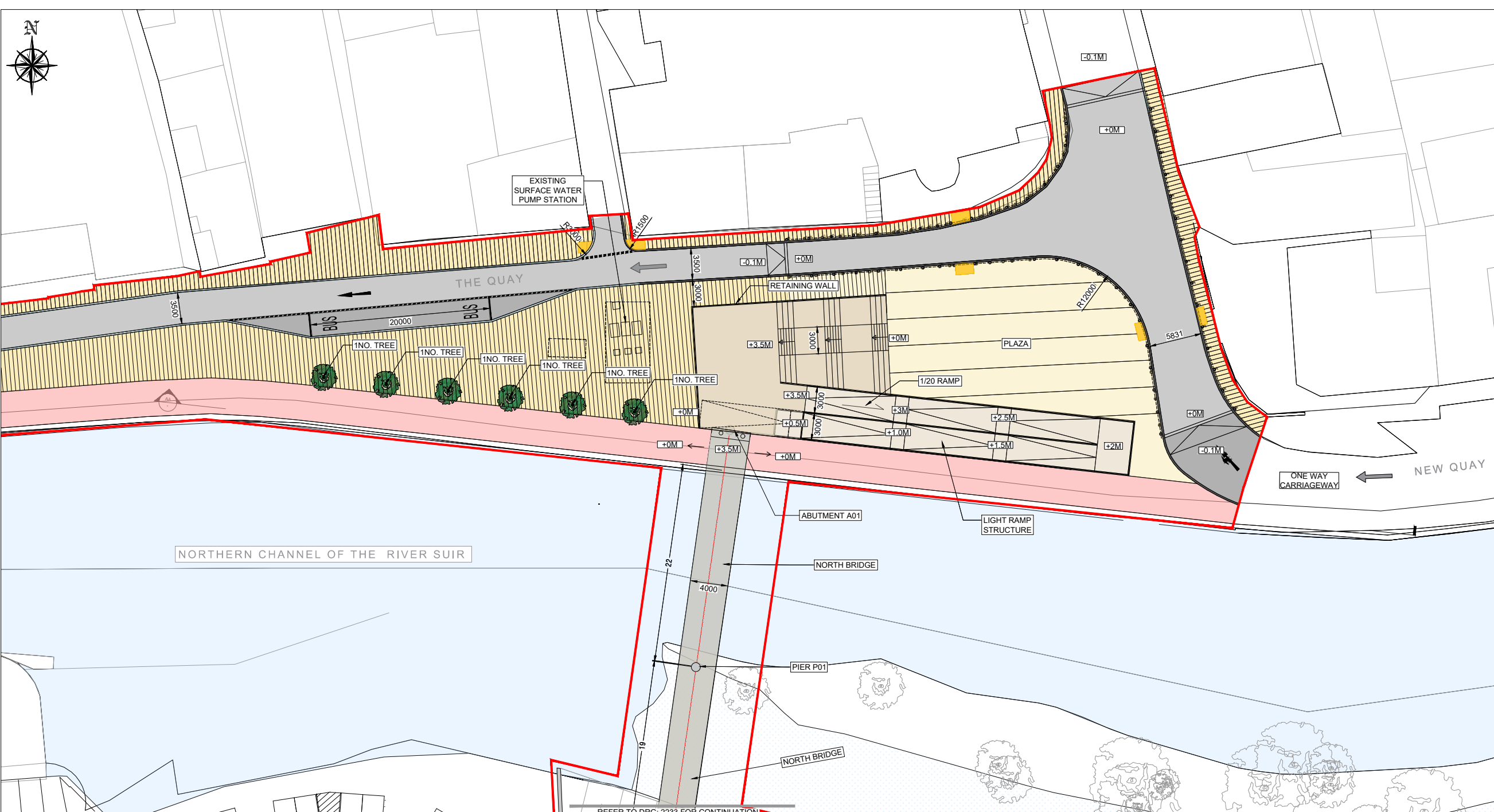
**LEGEND :**

- SITE BOUNDARY
- PEDESTRIAN BRIDGES - STEEL STRUCTURE - BUSH - HAMMERED CONCRETE FINISH LAID ON A WATERPROOF SURFACE
- VARIOUS SIZES OF STONE PAVING TO FOOTPATH (LIGHT GREY GRANITE AND / OR SANDSTONE)
- STONE AGGREGATE PAVING TO FOOTPATH (SILVER / SANDSTONE)
- ASPHALT FINISH TO ROAD & SHARED SURFACE
- STONE AGGREGATE FINISH TO THE SHARED SURFACE FOR PEDESTRIANS AND BICYCLES (BEIGE/WHITE/LIGHT GREY)
- EXPOSED STONE AGGREGATE FINISH TO STEPS AND RAMP (BEIGE/WHITE/LIGHT GREY)
- GRASSED AND PLANTED AREAS
- TACTILE SURFACE TO PEDESTRIAN CROSSINGS
- STONE KERBS TO FOOTPATH
- STONE KERBS TO PLANTER BED
- EXISTING PATH LINE
- SELECTED BOLLARD
- PROPOSED PLANTING (SHRUBS / WILDFLOWER)
- PROPOSED TREE:  
 BIG TREE-SALIX ALBA / SWEETGUM / RED MAPLE  
 MEDIUM TREE-RIVER BIRCH / ALNUS GLUTINOSA / BETULA PUBESCENS  
 CARPINUS BETULUS SMALL TREE-CRATAEGUS
- EXISTING TREE

Rev	Description	Drawn	Checked	Date
PL02	ISSUED FOR PLANNING RFI RESPONSE	FO	LP	06.08.24
PL01	ISSUED FOR PLANNING	FO	LP	22.09.23

Clifton Scannell Emerson Associates Limited  
 Consulting Engineers,  
 3rd Floor The Highline,  
 Bakers Point, Pottery Road,  
 Dun Laoghaire, Co. Dublin,  
 Ireland, A96 KW29  
 T. +353 1 288 5006  
 F. +353 1 283 3466  
 E. info@csea.ie  
 W. www.csea.ie

**TIPPERARY COUNTY COUNCIL**  
 Client  
**SUIR ISLAND INFRASTRUCTURE LINKS**  
 Project  
**OPTION 03 OVERALL LAYOUT PLAN**  
 Dwg. Title  
 Drawn By: FO Date: SEPT 2023  
 Checked By: LP Scale: 1:1000 @ A1  
 Project Code: 20\_071 - CSE - GEN - XX - DR - C - 2230  
 Status Code: S2 SUITABLE FOR INFORMATION  
 Project Status: PL02 ISSUED FOR PLANNING



REFER TO DRG: 2233 FOR CONTINUATION  
**PLAZA - PLAN**  
 SCALE 1:250



DATUM 15M  
 SECTION AA' NORTH PLAZA  
 SCALE 1:250

**CLIENT**  
 Comhairle Contae Thiobraid Árann  
 Tipperary County Council

**ARCHITECTS** **ARCHEOLOGISTS**  
 dhbarchitects CourtneyDeery  
 ARCHAEOLOGY & CULTURAL HERITAGE

**BRIDGES** **ENGINEERS**  
 MARC MIMRAM ARCHITECTURE INGÉNIERIE Clifton Scannell Emerson Associates

**ENVIRONMENTAL CONSULTANTS**  
 awnconsulting A Tróilte Consultants Company

**LIGHTING CONSULTANTS**  
 Douglas Carroll Consulting Engineers

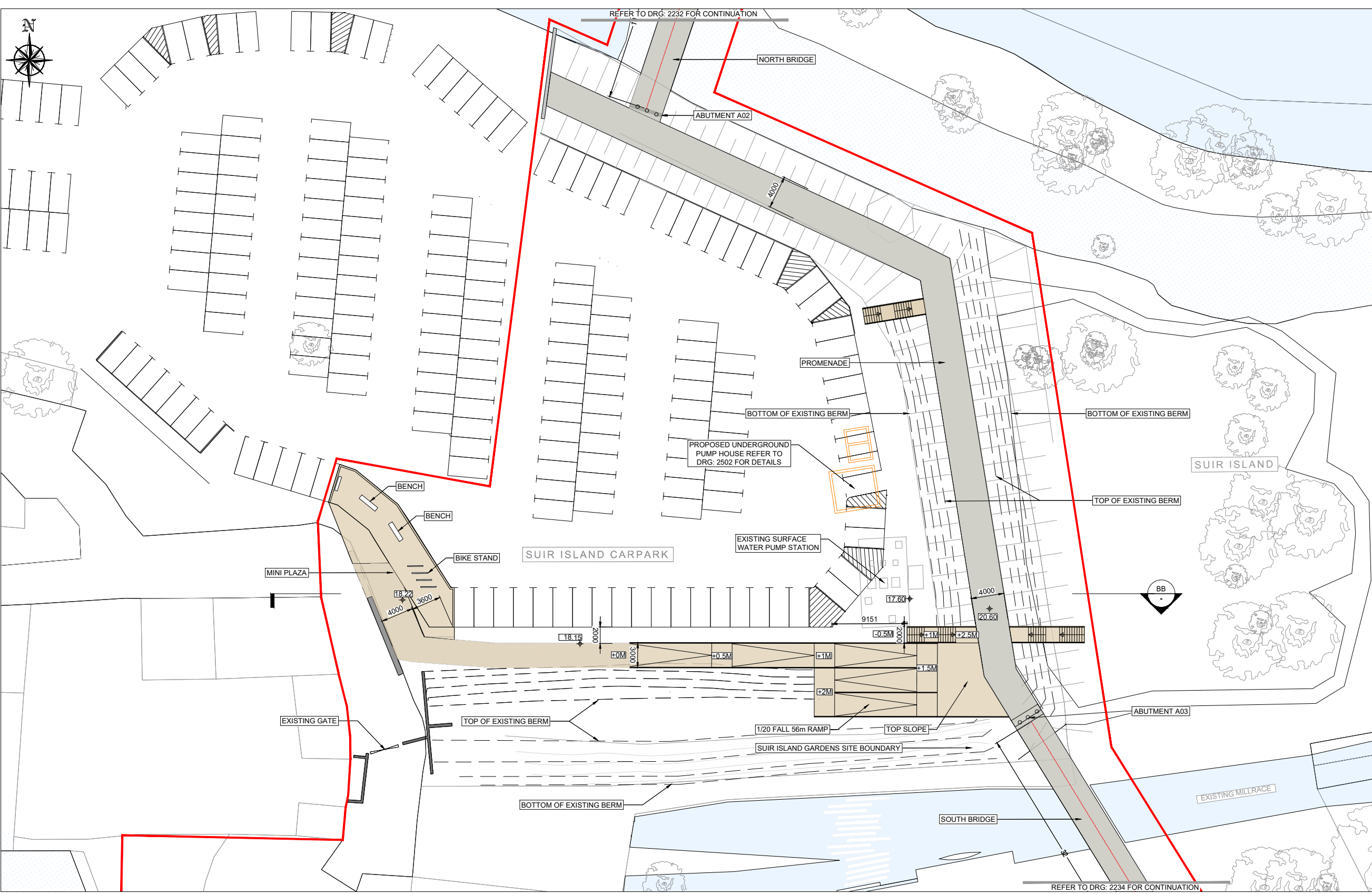
**LEGEND :**

- SITE BOUNDARY
- PEDESTRIAN BRIDGES - STEEL STRUCTURE - BUSH - HAMMERED CONCRETE FINISH LAID ON A WATERPROOF SURFACE
- VARIOUS SIZES OF STONE PAVING TO FOOTPATH (LIGHT GREY GRANITE AND / OR SANDSTONE)
- STONE AGGREGATE PAVING TO FOOTPATH (SILVER / SANDSTONE)
- ASPHALT FINISH TO ROAD & SHARED SURFACE
- STONE AGGREGATE FINISH TO THE SHARED SURFACE FOR PEDESTRIANS AND BICYCLES (BEIGE/WHITE/LIGHT GREY)
- EXPOSED STONE AGGREGATE FINISH TO STEPS AND RAMP (BEIGE/WHITE/LIGHT GREY)
- GRASSED AND PLANTED AREAS
- TACTILE SURFACE TO PEDESTRIAN CROSSINGS
- STONE KERBS TO FOOTPATH
- STONE KERBS TO PLANTER BED
- EXISTING PATH LINE
- PROPOSED PLANTING (SHRUBS / WILDFLOWER)
- BL SELECTED BOLLARD
- PROPOSED TREE: BIG TREE-SALIX ALBA / SWEETGUM / RED MAPLE MEDIUM TREE-RIVER BIRCH / ALNUS GLUTINOSA / BETULA PUBESCENS SMALL TREE-CRATAEGUS
- EXISTING TREE

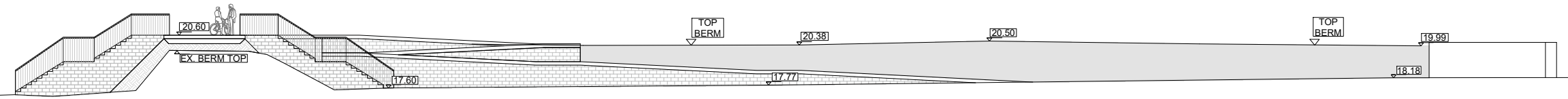
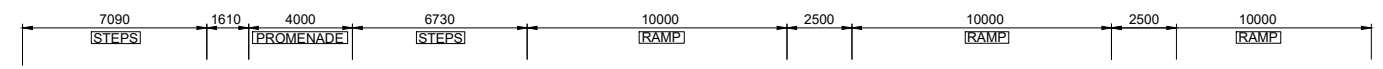
Rev	Description	Drawn	Checked	Date
PL02	ISSUED FOR PLANNING RFI RESPONSE	FO	LP	06.08.24
PL01	ISSUED FOR PLANNING	FO	LP	22.09.23

**Clifton Scannell Emerson Associates**  
 Consulting Engineers  
 3rd Floor The Highline, Bakers Point, Pottery Road, Dun Laoghaire, Co. Dublin, Ireland, A96 KW29  
 T. +353 1 288 5006  
 F. +353 1 283 3466  
 E. info@csea.ie  
 W. www.csea.ie

**TIPPERARY COUNTY COUNCIL**  
 Client  
**SUIR ISLAND INFRASTRUCTURE LINKS**  
 Project  
**OPTION 03 NORTH PLAZA PLAN & SECTION AA**  
 Dwg. Title  
 Drawn By FO Date SEPT 2023  
 Checked By LP Scale 1:250 @ A1  
 Project Code Originator Zone/Phase Level Type Role Dwg. No.  
**20\_071 - CSE - GEN - XX - DR - C - 2232**  
 S2 SUITABLE FOR INFORMATION  
 PL02 ISSUED FOR PLANNING



CARPARK - PLAN  
SCALE 1:250



DATUM 15M  
SECTION BB CARPARK  
SCALE 1:100

DRAWING IS PRODUCED USING THE IRISH TRANSVERSE MERCATOR (ITM) GEOGRAPHIC COORDINATE SYSTEM **A1**

CLIENT  
Comhairle Contae Thiobraid Arann  
Tipperary County Council

ARCHITECTS  
dhbarchitects  
ARCHITECTS

ARCHAEOLOGISTS  
CourtneyDeery  
ARCHAEOLOGY & CULTURAL HERITAGE

BRIDGES  
MARC MIMRAM  
ARCHITECTURE  
INGÉNIERIE

ENGINEERS  
Clifton Scannell Emerson  
Associates

ENVIRONMENTAL CONSULTANTS  
awnconsulting  
A Tróilte Consultants Company

LIGHTING CONSULTANTS  
Douglas Carroll  
Consulting Engineers

LEGEND :

- SITE BOUNDARY
- PEDESTRIAN BRIDGES - STEEL STRUCTURE - BUSH - HAMMERED CONCRETE FINISH LAID ON A WATERPROOF SURFACE
- VARIOUS SIZES OF STONE PAVING TO FOOTPATH (LIGHT GREY GRANITE AND / OR SANDSTONE)
- STONE AGGREGATE PAVING TO FOOTPATH (SILVER / SANDSTONE)
- ASPHALT FINISH TO ROAD & SHARED SURFACE
- STONE AGGREGATE FINISH TO THE SHARED SURFACE FOR PEDESTRIANS AND BICYCLES (BEIGE/WHITE/LIGHT GREY)
- EXPOSED STONE AGGREGATE FINISH TO STEPS AND RAMP (BEIGE/WHITE/LIGHT GREY)
- GRASSED AND PLANTED AREAS
- TACTILE SURFACE TO PEDESTRIAN CROSSINGS
- STONE KERBS TO FOOTPATH
- STONE KERBS TO PLANTER BED
- EXISTING PATH LINE
- SELECTED BOLLARD
- PROPOSED PLANTING (SHRUBS / WILDFLOWER)
- PROPOSED TREE:  
BIG TREE-SALIX ALBA / SWEETGUM / RED MAPLE  
MEDIUM TREE-RIVER BIRCH / ALNUS GLUTINOSA / BETULA PUBESCENS  
CARPINUS BETULUS SMALL TREE-CRATAEGUS
- EXISTING TREE

PL02	ISSUED FOR PLANNING RFI RESPONSE	FO	LP	06.08.24
PL01	ISSUED FOR PLANNING	FO	LP	22.09.23
Rev	Description	Drawn	Checked	Date

Clifton Scannell Emerson  
Associates  
Consulting Engineers  
3rd Floor The Highline,  
Bakers Point, Pottery Road,  
Dun Laoighaire, Co. Dublin,  
Ireland, A96 KW29  
T. +353 1 288 5006  
F. +353 1 283 3466  
E. info@csea.ie  
W. www.csea.ie

TIPPERARY  
COUNTY COUNCIL

Client  
SUIR ISLAND  
INFRASTRUCTURE LINKS

Project  
OPTION 03 SUIR ISLAND CARPARK  
ACCESS PLAN & SECTION BB

Dwg. Title

Drawn By  
FO  
Date  
SEPT 2023

Checked By  
LP  
Scale  
1:150 @ A1

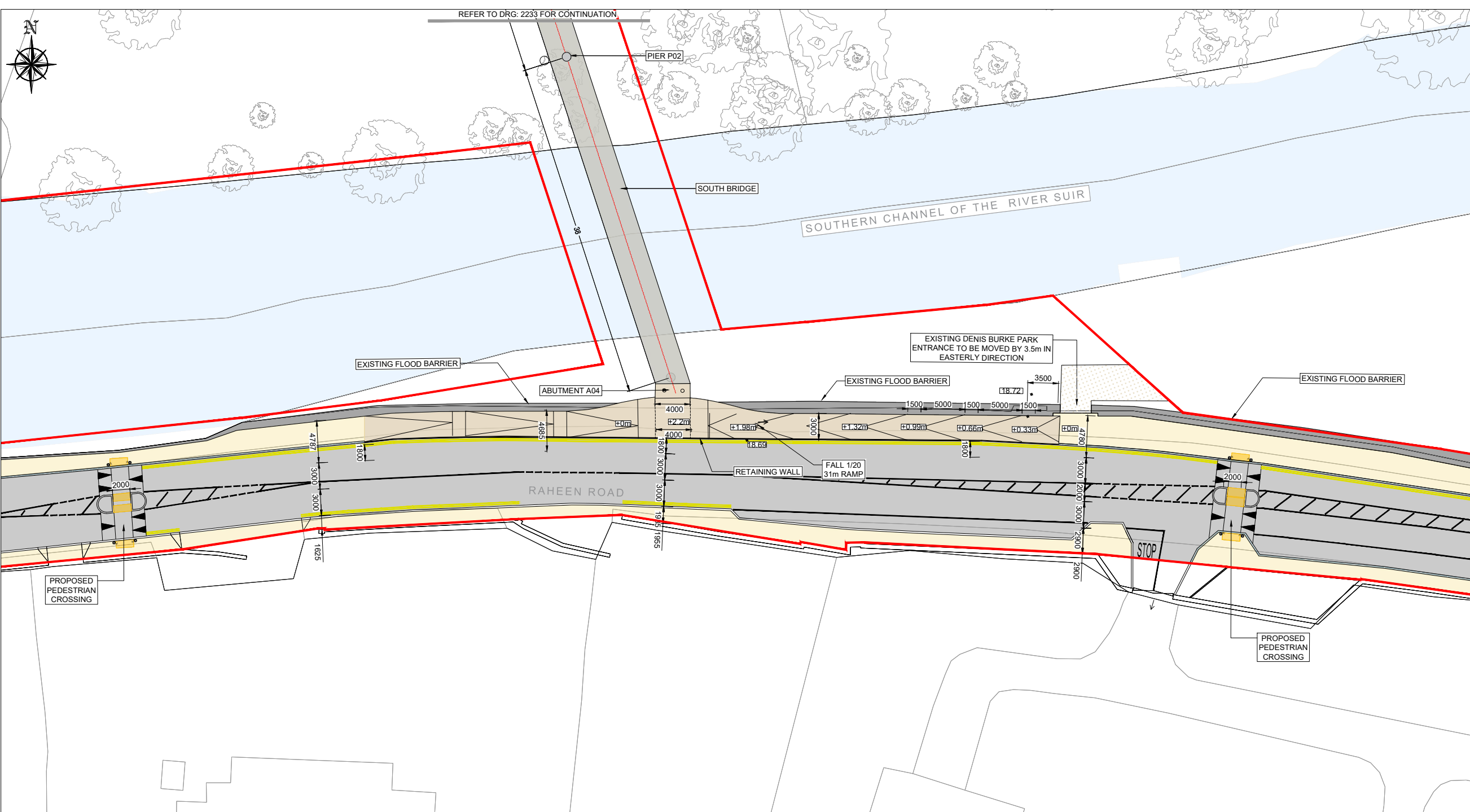
20\_071

CSEA Job No.

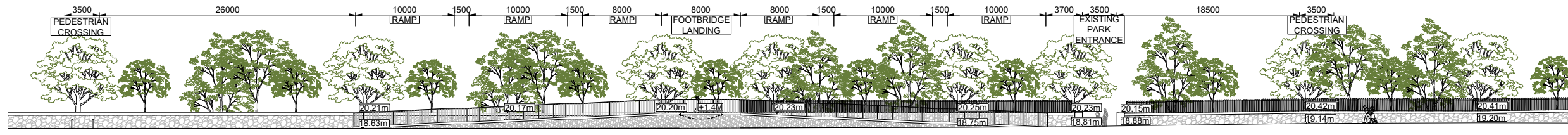
Project Code  
20\_071 - CSE - GEN - XX - DR - C - 2233

S2  
Status Code  
SUITABLE FOR INFORMATION

PL02  
Revision  
Project Status  
ISSUED FOR PLANNING



RAHEEN ROAD - PLAN  
SCALE 1:250



DATUM 15M  
SECTION CC SOUTH BANK  
SCALE 1:150

DRAWING IS PRODUCED USING THE IRISH TRANSVERSE MERCATOR (ITM) GEOGRAPHIC COORDINATE SYSTEM **A1**

**CLIENT**  
Comhairle Contae Thiobraid Arann  
Tipperary County Council

**ARCHITECTS** **ARCHEOLOGISTS**  
dhbarchitects CourtneyDeery  
ARCHAEOLOGY & CULTURAL HERITAGE

**BRIDGES** **ENGINEERS**  
MARC MIMRAM ARCHITECTURE INGENIERIE Clifton Scannell Emerson Associates

**ENVIRONMENTAL CONSULTANTS**  
awnconsulting A Tróilte Consultants Company

**LIGHTING CONSULTANTS**  
Douglas Carroll Consulting Engineers

- LEGEND :**
- SITE BOUNDARY
  - PEDESTRIAN BRIDGES - STEEL STRUCTURE - BUSH - HAMMERED CONCRETE FINISH LAID ON A WATERPROOF SURFACE
  - VARIOUS SIZES OF STONE PAVING TO FOOTPATH (LIGHT GREY GRANITE AND / OR SANDSTONE)
  - STONE AGGREGATE PAVING TO FOOTPATH (SILVER / SANDSTONE)
  - ASPHALT FINISH TO ROAD & SHARED SURFACE
  - STONE AGGREGATE FINISH TO THE SHARED SURFACE FOR PEDESTRIANS AND BICYCLES (BEIGE/WHITE/LIGHT GREY)
  - EXPOSED STONE AGGREGATE FINISH TO STEPS AND RAMP (BEIGE/WHITE/LIGHT GREY)
  - GRASSED AND PLANTED AREAS
  - TACTILE SURFACE TO PEDESTRIAN CROSSINGS
  - STONE KERBS TO FOOTPATH
  - STONE KERBS TO PLANTER BED
  - EXISTING PATH LINE
  - SELECTED BOLLARD
  - PROPOSED PLANTING (SHRUBS / WILDFLOWER)
  - PROPOSED TREE: BIG TREE-SALIX ALBA / SWEETGUM / RED MAPLE  
MEDIUM TREE-RIVER BIRCH / ALNUS GLUTINOSA / BETULA PUBESCENS  
CARPINUS BETULUS SMALL TREE-CRATAEGUS
  - EXISTING TREE

PL02	ISSUED FOR PLANNING RFI RESPONSE	FO	LP	06.08.24
PL01	ISSUED FOR PLANNING	FO	LP	22.09.23

Rev	Description	Drawn	Checked	Date

**Clifton Scannell Emerson Associates**  
Consulting Engineers  
3rd Floor The Highline, Bakers Point, Pottery Road, Dun Laoghaire, Co. Dublin, Ireland, A96 KW29  
T: +353 1 288 5006  
F: +353 1 283 3466  
E: info@csea.ie  
W: www.csea.ie

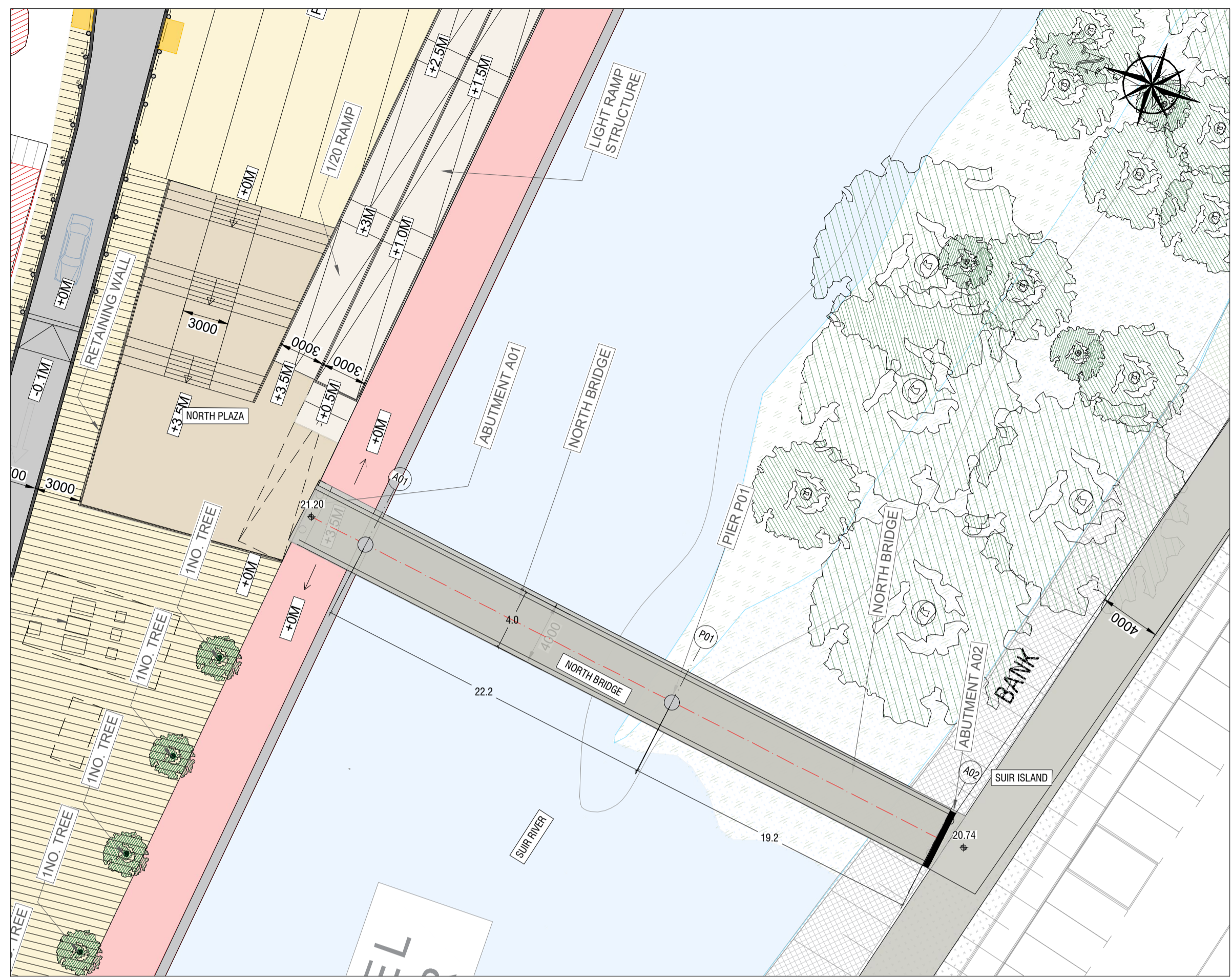
**TIPPERARY COUNTY COUNCIL**  
Client  
**SUIR ISLAND INFRASTRUCTURE LINKS**  
Project  
**OPTION 03 SOUTH ARRIVAL PLAN & SECTION CC**  
Dwg. Title

Drawn By **FO** Date **SEPT 2023**  
Checked By **LP** Scale **1:250 @ A1**  
Dwg. No. **20\_071**  
CSEA Job No.

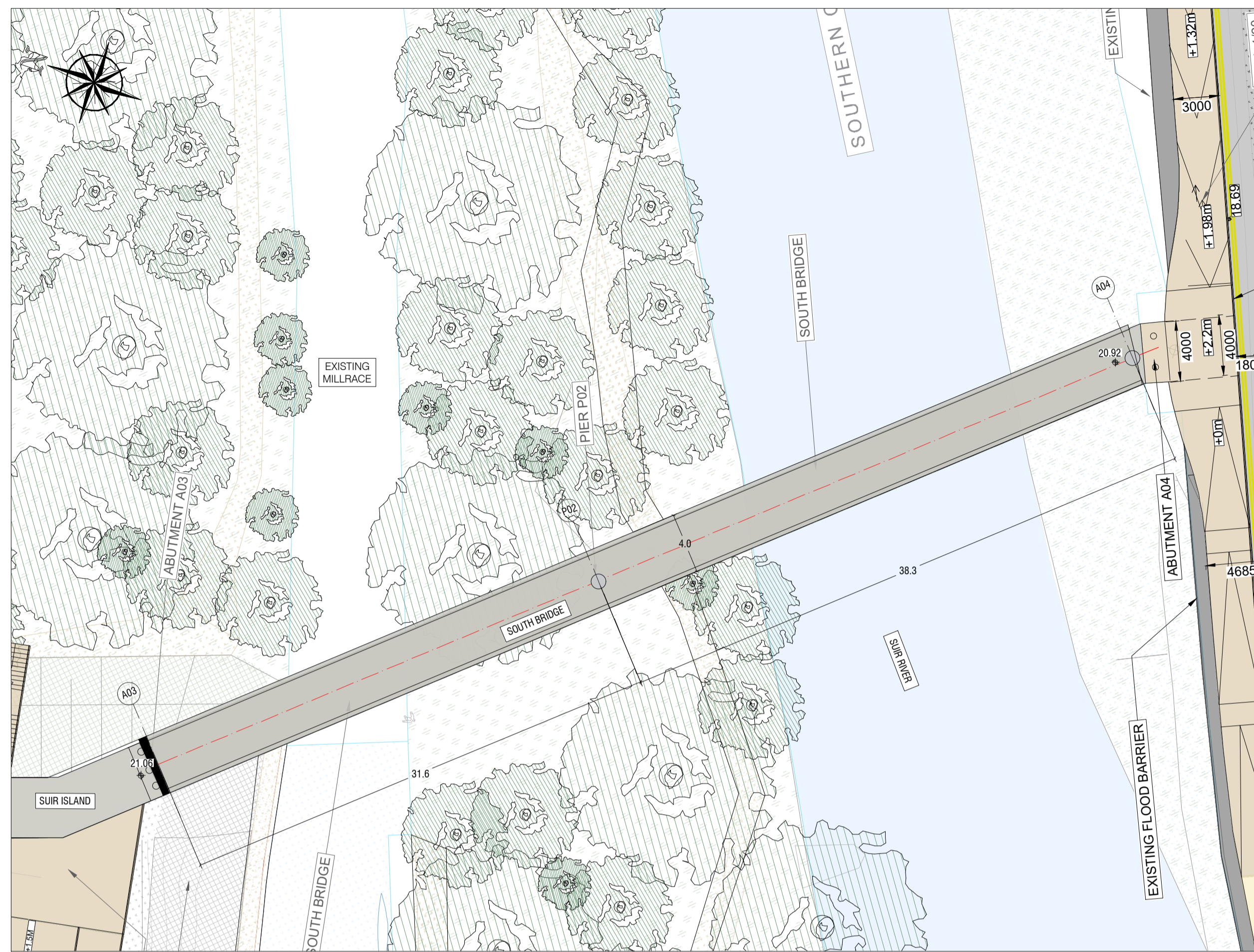
Project Code Originator Zone/Phase Level Type Role Dwg. No.  
**20\_071 - CSE - GEN - XX - DR - C - 2334**

**S2** SUITABLE FOR INFORMATION  
Status Code Suitability Description

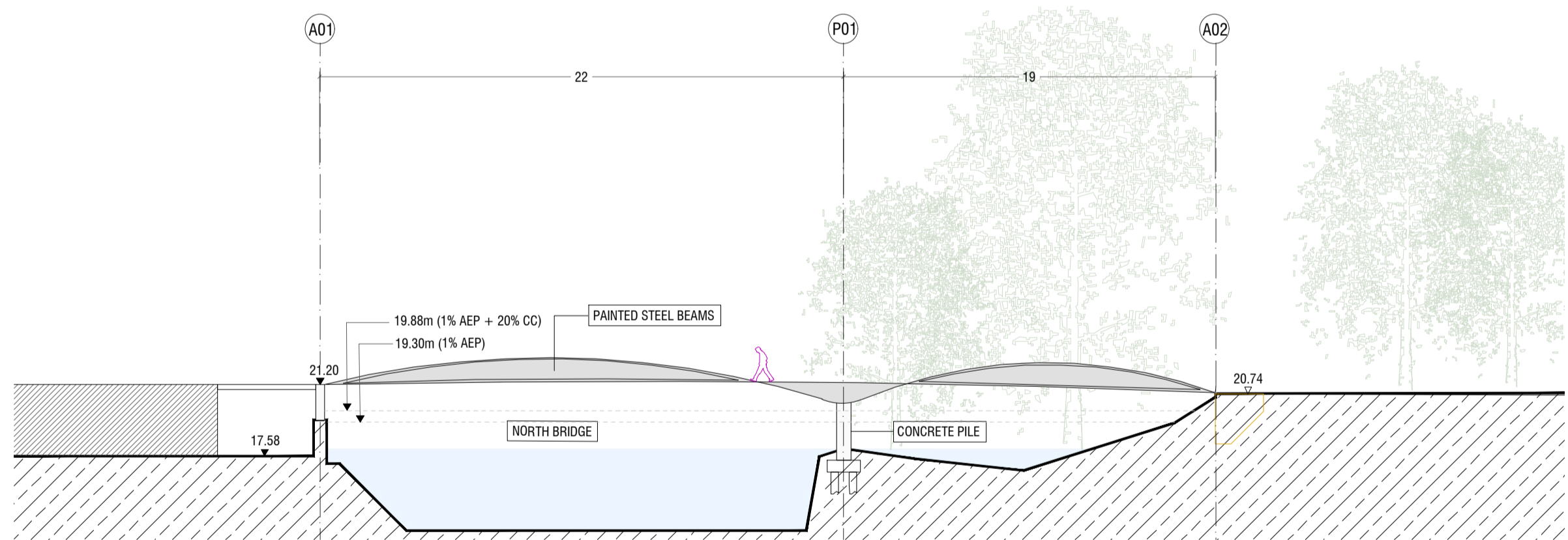
**PL02** ISSUED FOR PLANNING  
Revision Project Status



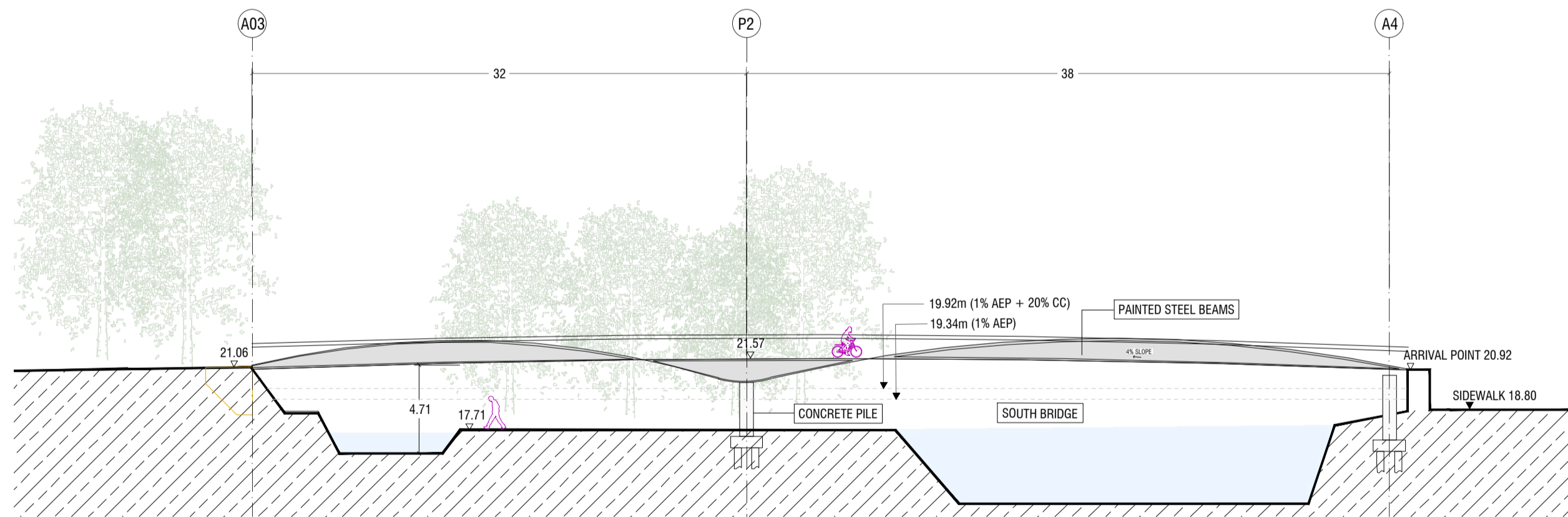
SITE PLAN NORTH BRIDGE 1/250



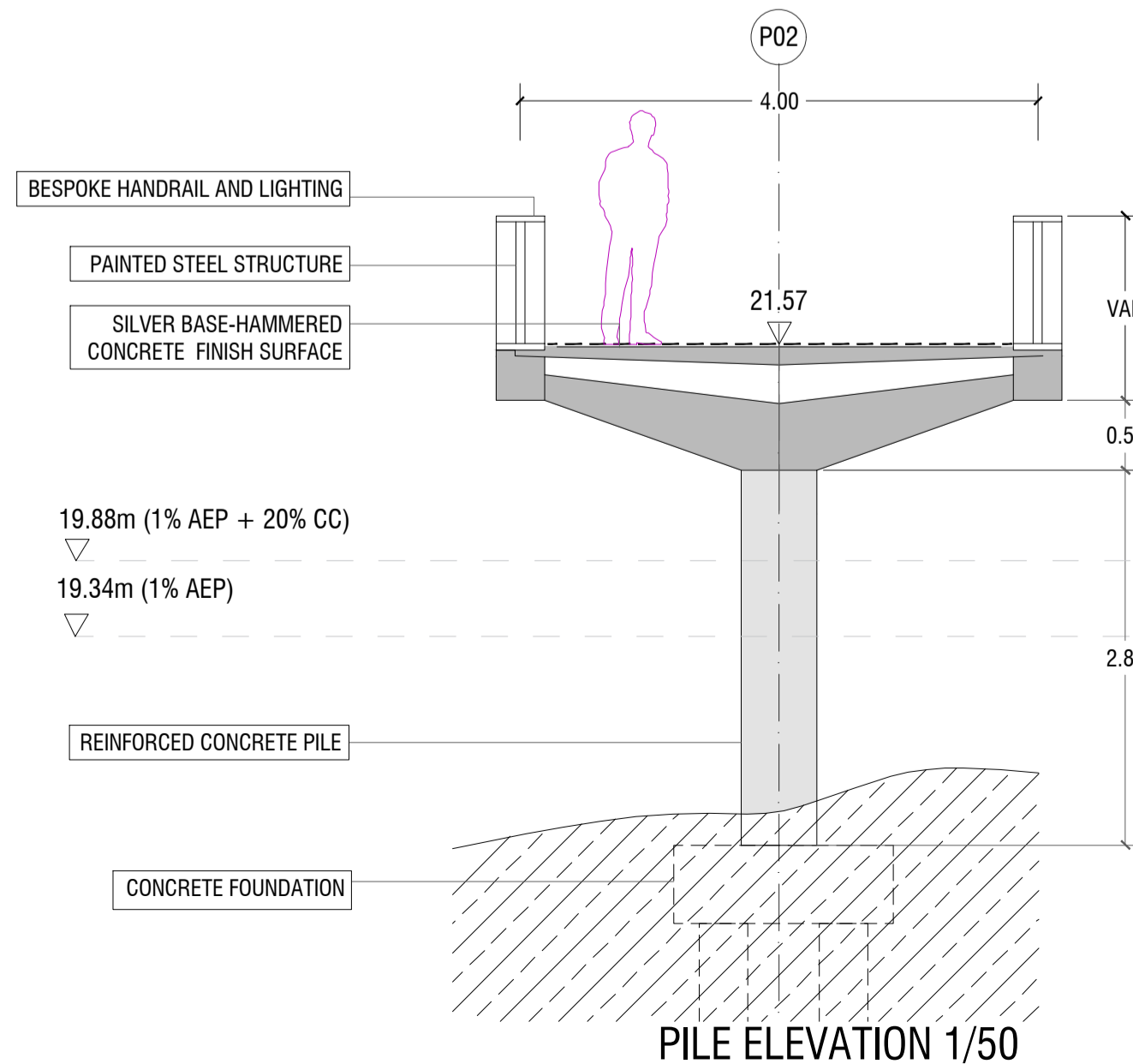
SITE PLAN SOUTH BRIDGE 1/250



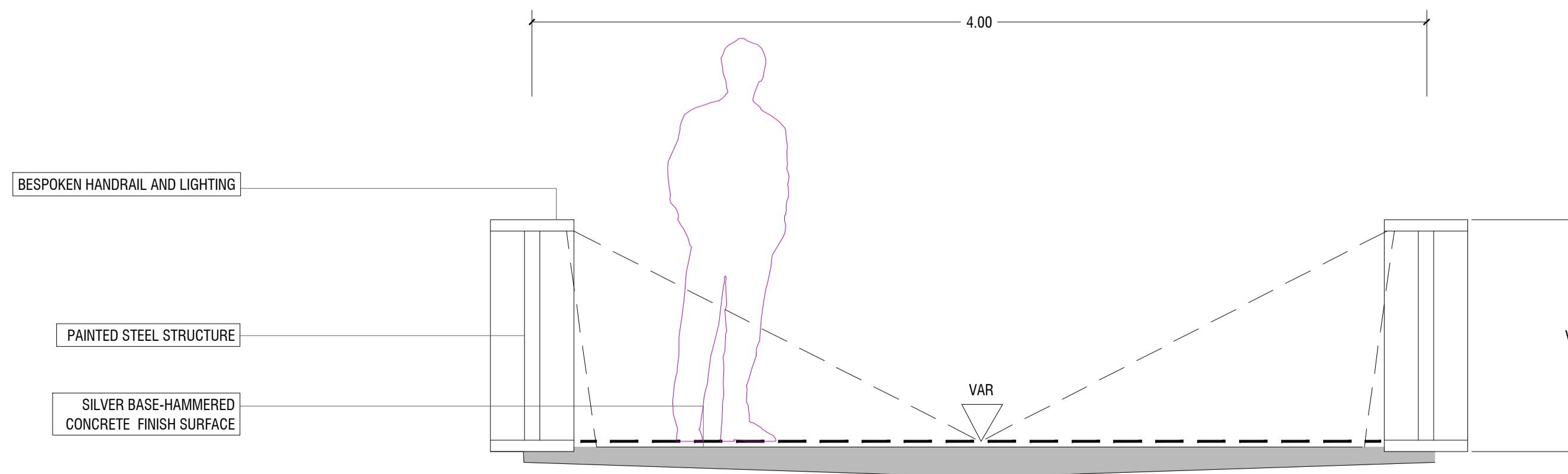
ELEVATION NORTH BRIDGE 1/250



ELEVATION SOUTH BRIDGE 1/250



PILE ELEVATION 1/50



TYPICAL SECTION 1/20

DRAWING IS PRODUCED USING THE IRISH TRANSVERSE MERCATOR (ITM) GEOGRAPHIC COORDINATE SYSTEM

A1

CLIENT: Comhairle Contae Thiobraid Árann Tipperary County Council

ARCHITECTS: dhbarchitects COURTNEYDEERY ARCHITECTS & CULTURAL HERITAGE

BRIDGES: MARC MIMRAM ARCHITECTURE INGÉNIERIE ENGINEERS: Clifton Scannell Emerson Associates

ENVIRONMENTAL CONSULTANTS: awnconsulting A Tricky Consultants Company

LIGHTING CONSULTANTS: Douglas Carroll Consulting Engineers

NOTES:  
 AOX = ABUTMENT FOUNDATION NUMBER X  
 POX = PILE FOUNDATION NUMBER X

Rev	Description	Drawn	Checked	Date
PL02	ISSUED FOR PLANNING RFI RESPONSE	FO	LP	06.08.24
PL01	ISSUED FOR PLANNING	FO	LP	22.09.23

Clifton Scannell Emerson Associates Limited  
 Consulting Engineers,  
 3rd Floor The Highline,  
 Bakers Point, Pottery Road,  
 Dun Laoighaire, Co. Dublin,  
 Ireland, A96 KW29

T: +353 1 288 5006  
 F: +353 1 283 3466  
 E: info@csea.ie  
 W: www.csea.ie

TIPPERARY COUNTY COUNCIL

Client: SUIR ISLAND INFRASTRUCTURE LINKS

Project: OPTION 03 BRIDGE PLANS & ELEVATIONS

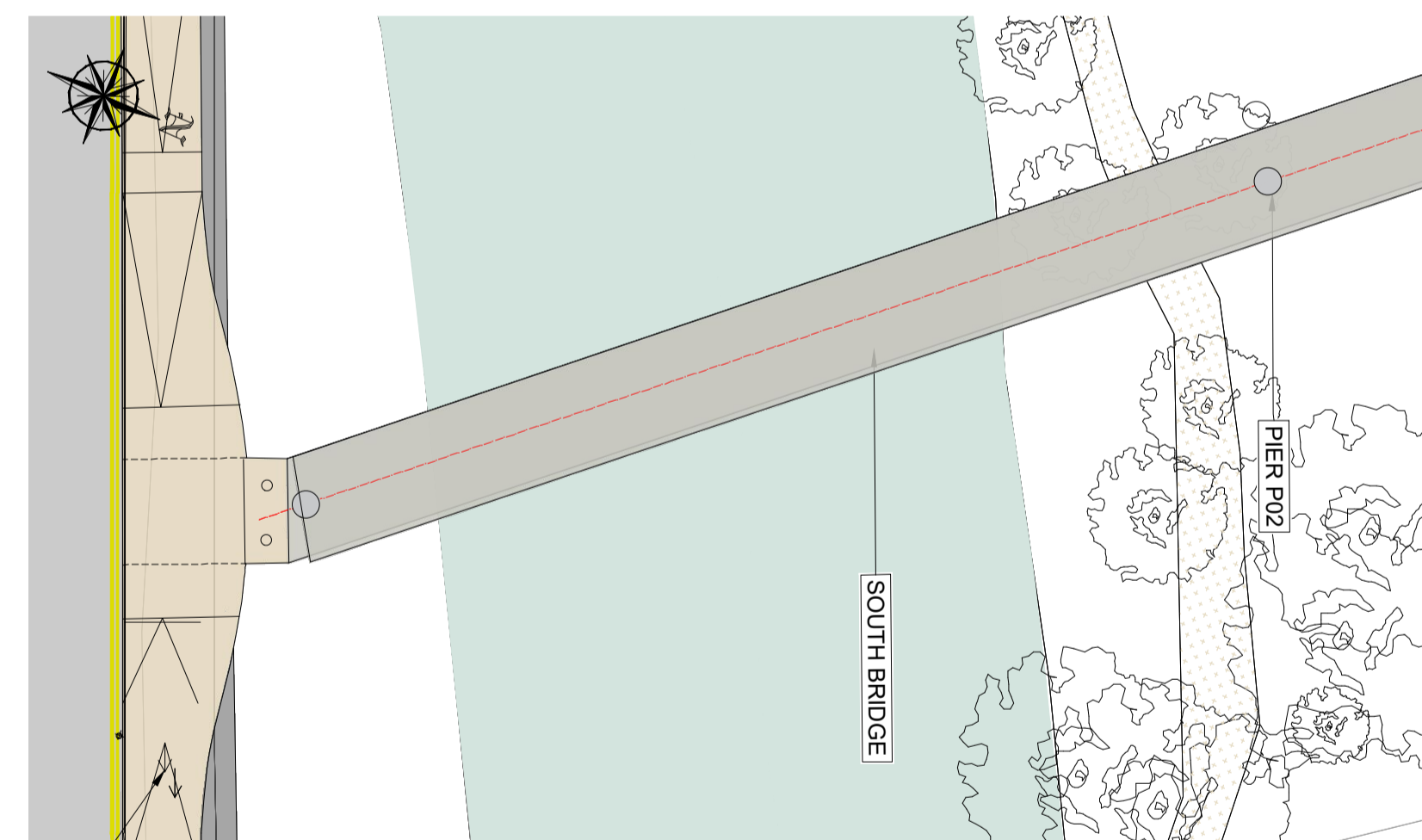
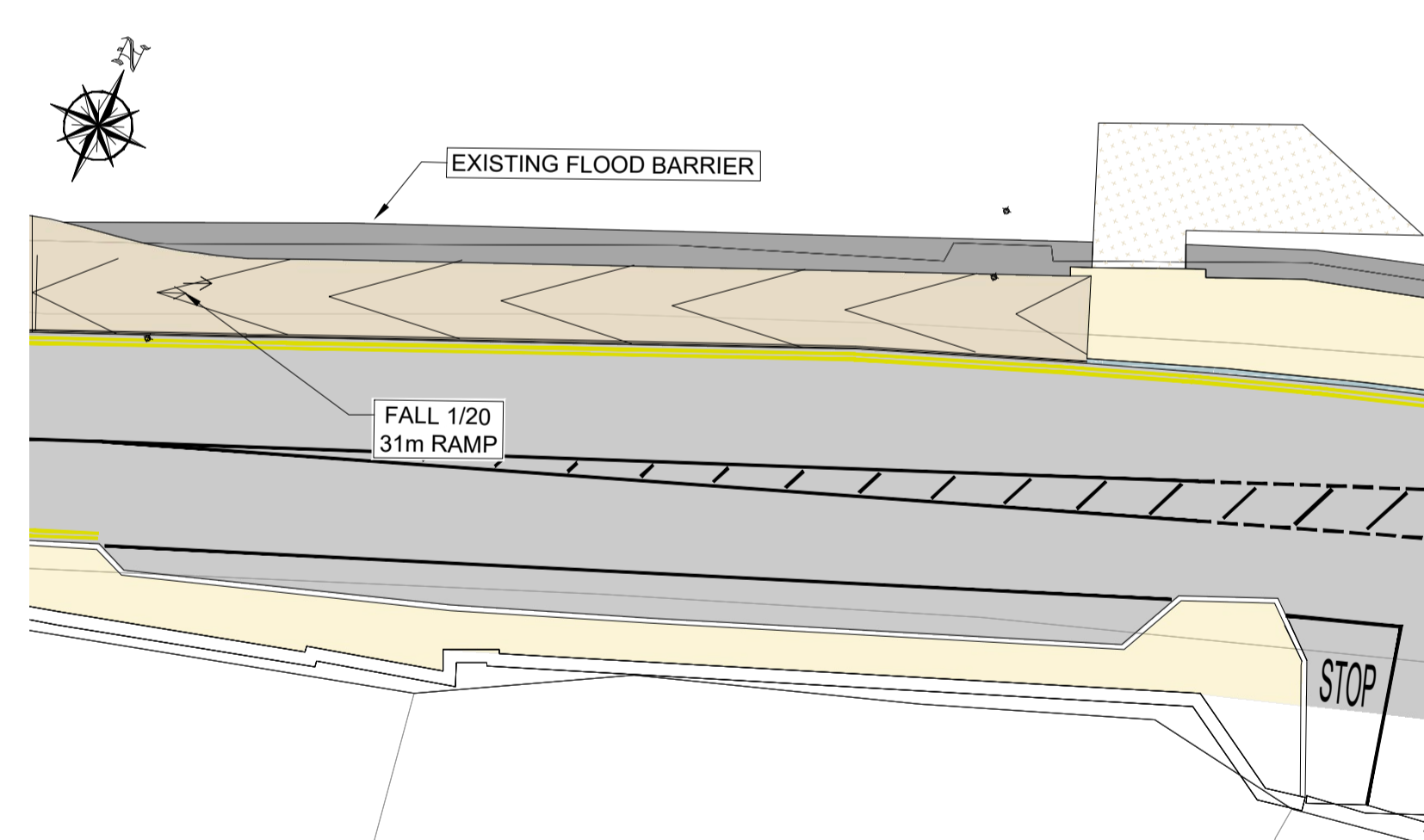
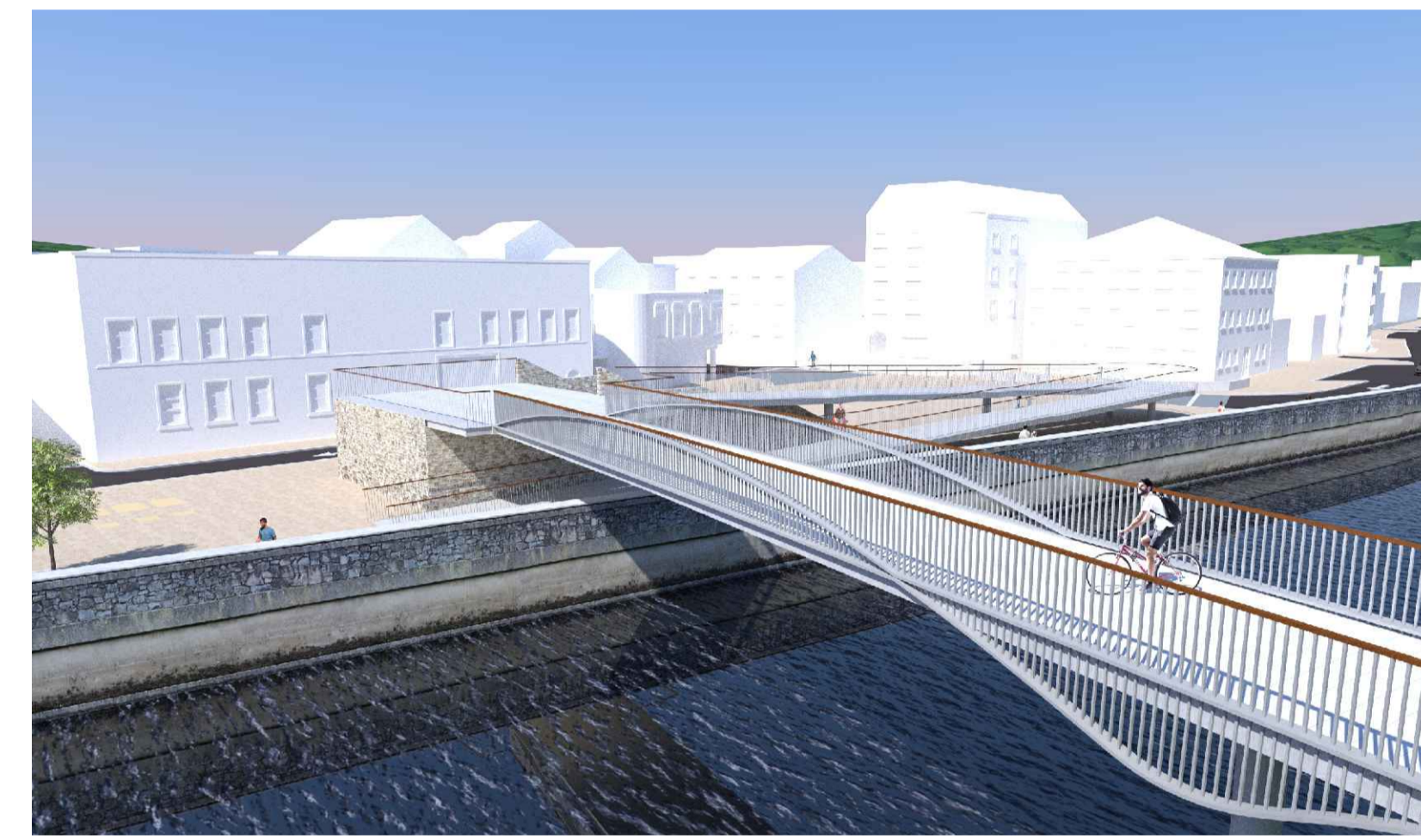
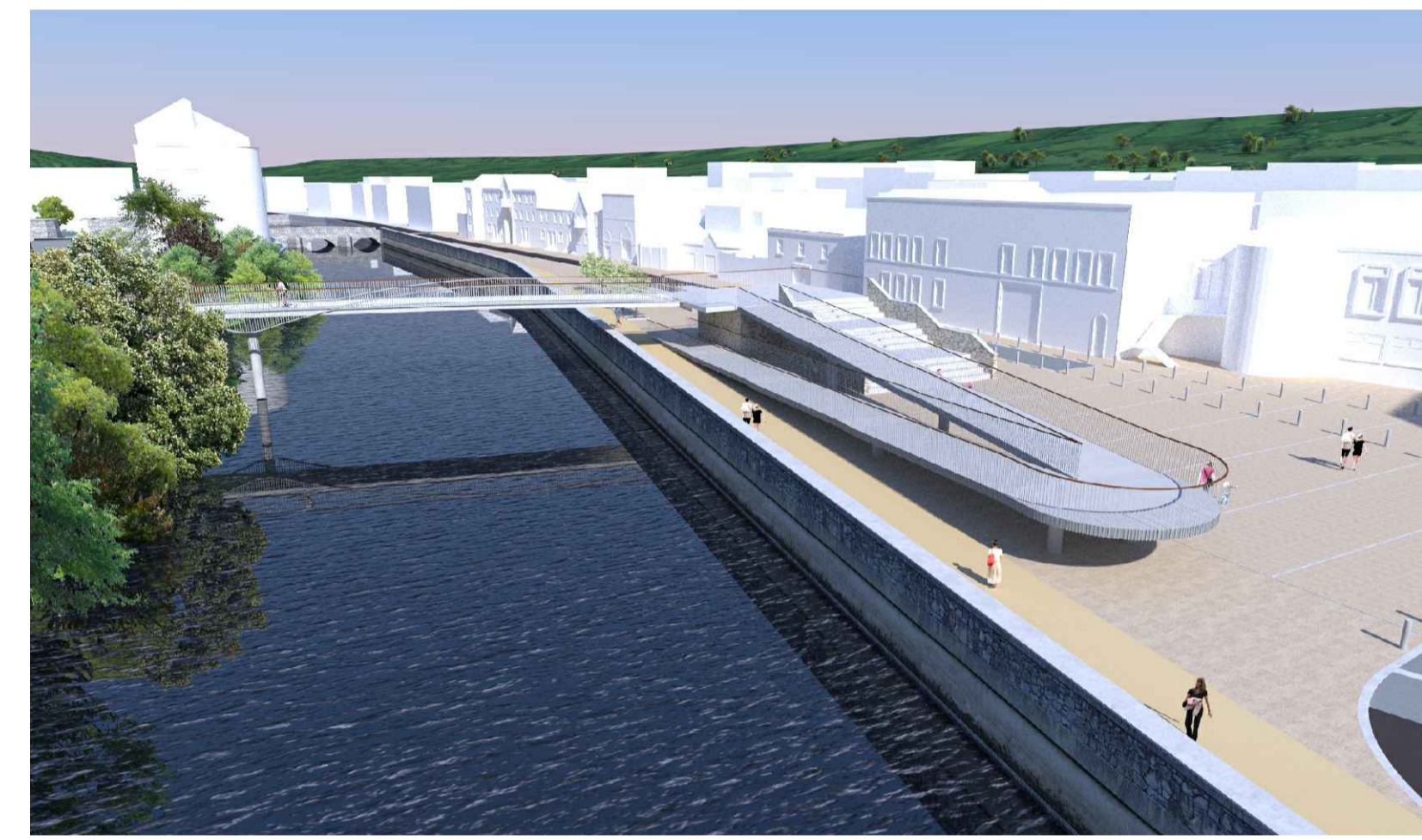
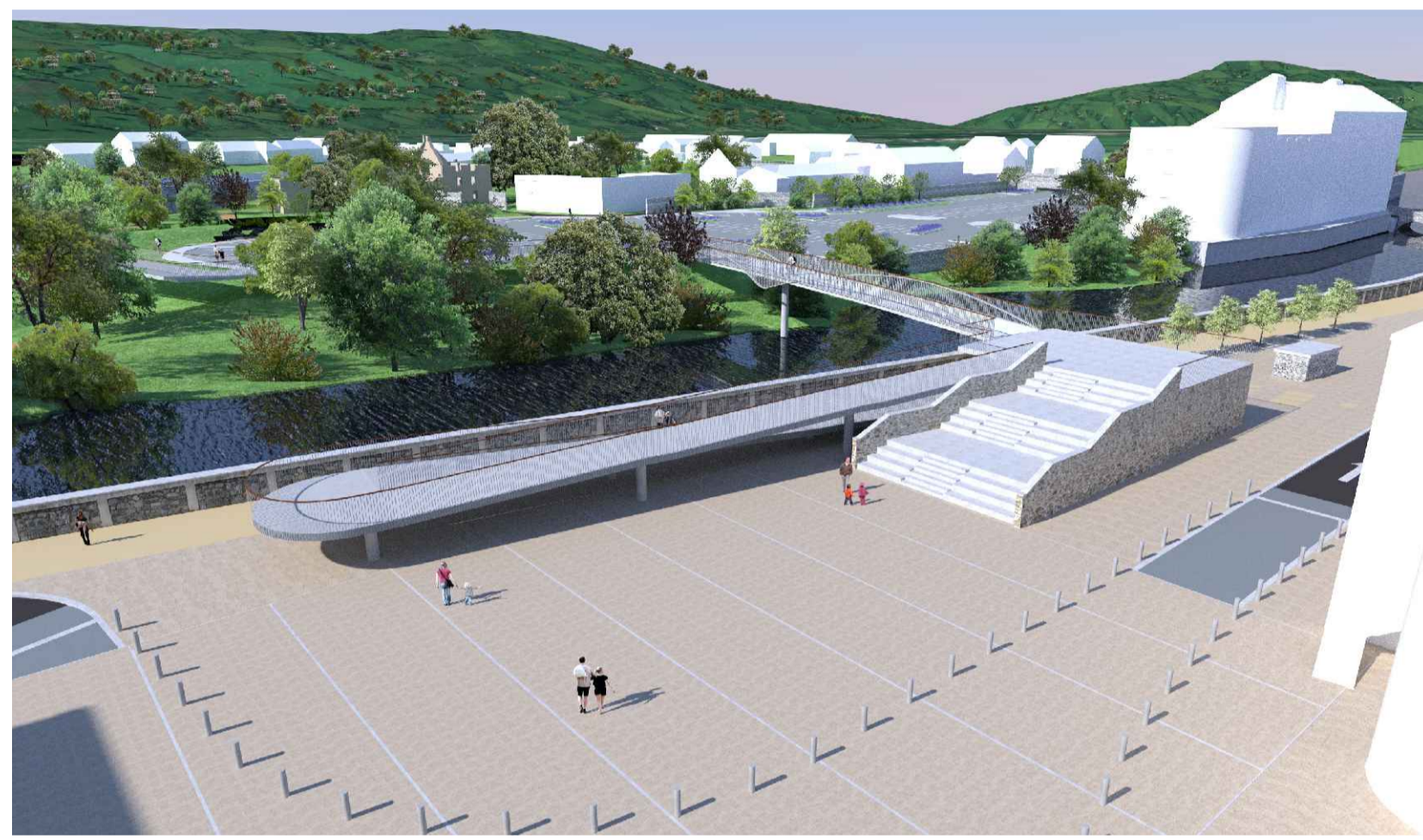
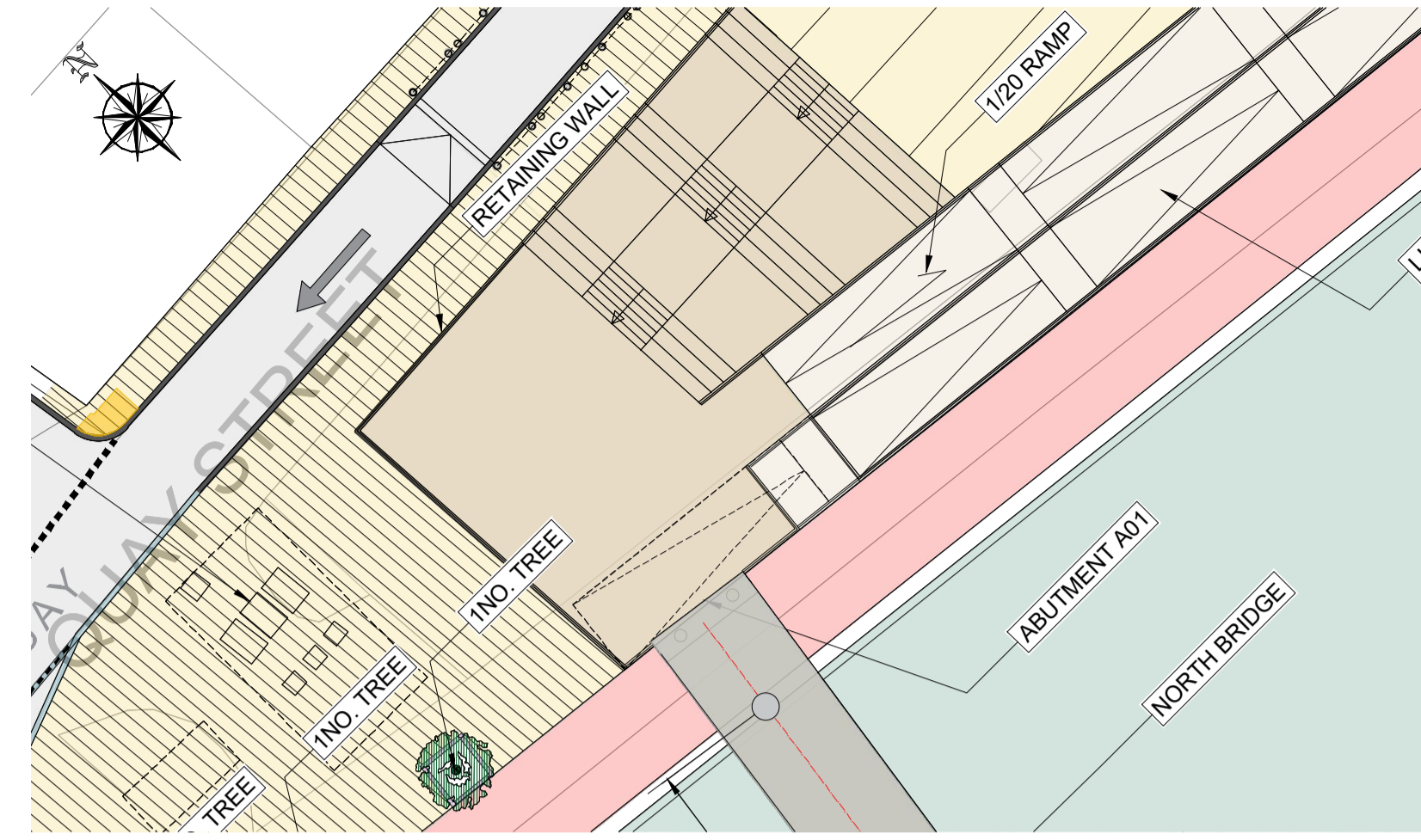
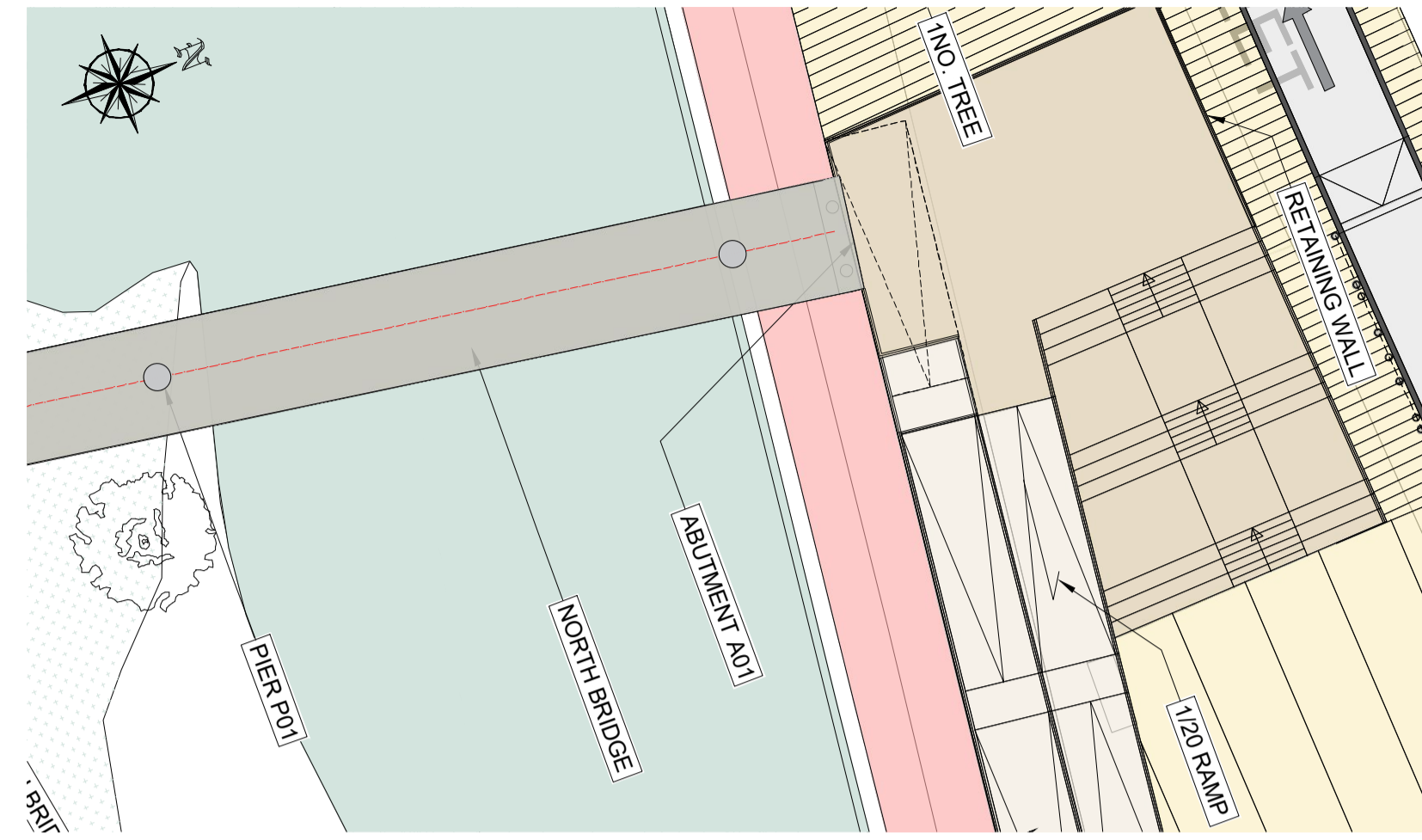
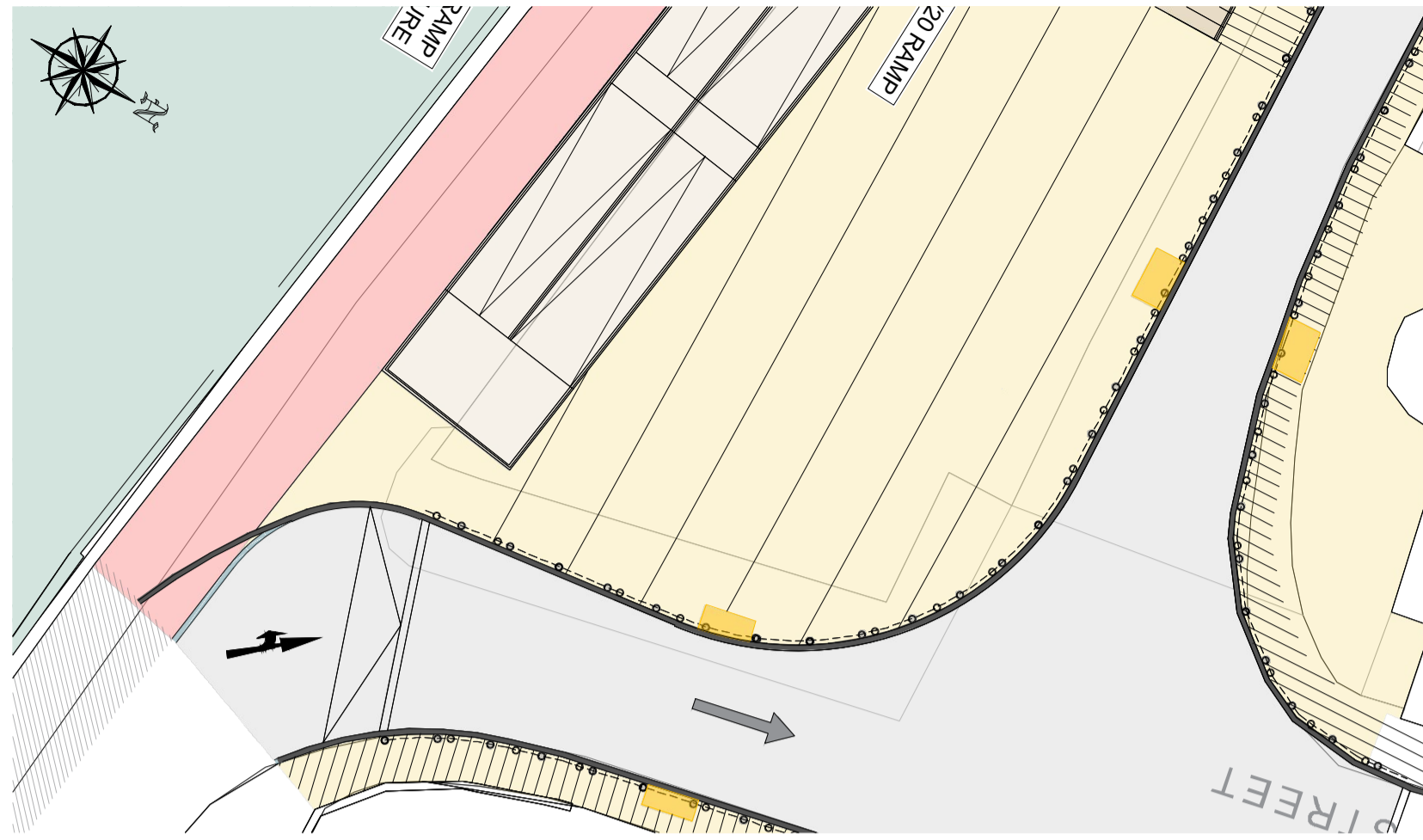
Dwg. Title: 20\_071

Drawn By: FO Date: SEPT 2023  
 Checked By: LP AS INDICATED @ A1 Scale: CSEA Job No.

Project Code: 20\_071 - CSE - GEN - XX - DR - C - 2235

S2 SUITABLE FOR INFORMATION  
 Status Code: Suitability Description

PL02 ISSUED FOR PLANNING  
 Revision: Project Status



DRAWING IS PRODUCED USING THE IRISH TRANSVERSE MERCATOR (ITM) GEOGRAPHIC COORDINATE SYSTEM **A1**

CLIENT  

 Comhairle Contae Thibraid Árann  
 Tipperary County Council

ARCHITECTS  

 ARCHITECTS  
 ARCHITECTS  

 CourtneyDeery  
 ARCHAEOLOGY & CULTURAL HERITAGE

BRIDGES  
 ENGINEERS  

 MARC MIMRAM  
 ARCHITECTURE  
 INGÉNIERIE  

 Clifton Scannell Emerson  
 Associates

ENVIRONMENTAL CONSULTANTS  

 awnconsulting  
 A Trifly Consultants Company  

 Clifton Scannell Emerson  
 Associates

LIGHTING CONSULTANTS  

 Douglas Carroll  
 Consulting Engineers

Rev	Description	Drawn	Checked	Date
PL02	ISSUED FOR PLANNING RFI RESPONSE	FO	LP	06.08.24
PL01	ISSUED FOR PLANNING	FO	LP	22.09.23

Clifton Scannell Emerson  
 Associates Limited  
 Consulting Engineers,  
 3rd Floor The Highline,  
 Bakers Point, Pottery Road,  
 Dun Laoghaire, Co. Dublin,  
 Ireland, A96 KW29  
 T. +353 1 288 5006  
 F. +353 1 283 3466  
 E. info@csea.ie  
 W. www.csea.ie

Client  
**TIPPERARY COUNTY COUNCIL**

Project  
**SUIR ISLAND INFRASTRUCTURE LINKS**

Dwg. Title  
**OPTION 03 3D VIEWS**

Drawn By  
 FO  
 Date  
 SEPT 2023  
 Scale  
 N.T.S@ A1  
 Checked By  
 LP  
 CSEA Job No.  
 20\_071

Project Code	Originator	Zone/Phase	Level	Type	Role	Dwg. No.
20_071	CSE	GEN	XX	DR	C	2236

S2  
 Status Code  
 SUITABLE FOR INFORMATION

PL02  
 Revision  
 Project Status  
 ISSUED FOR PLANNING